



ELECTRONIC COPY

LABORATORY GROWN DIAMOND REPORT

January 26, 2026
IGI Report Number LG769622059
Description LABORATORY GROWN DIAMOND
Shape and Cutting Style CUT CORNERED RECTANGULAR MODIFIED BRILLIANT
Measurements 10.14 X 7.03 X 4.78 MM

GRADING RESULTS

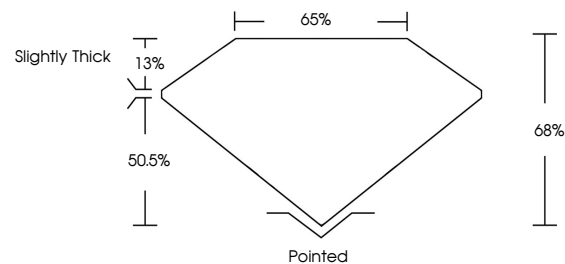
Carat Weight 2.99 CARATS
Color Grade E
Clarity Grade VS 1

ADDITIONAL GRADING INFORMATION

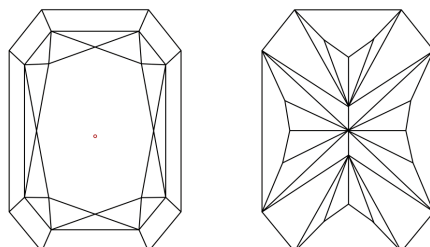
Polish EXCELLENT
Symmetry EXCELLENT
Fluorescence NONE
Inscription(s) IGI LG769622059

Comments: This Laboratory Grown Diamond was created by Chemical Vapor Deposition (CVD) growth process.
Type IIa

PROPORTIONS

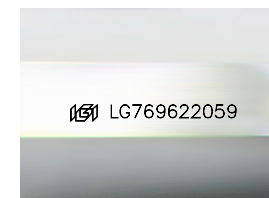


CLARITY CHARACTERISTICS



KEY TO SYMBOLS

Red symbols indicate internal characteristics.
Green symbols indicate external characteristics.



Sample Image Used

COLOR

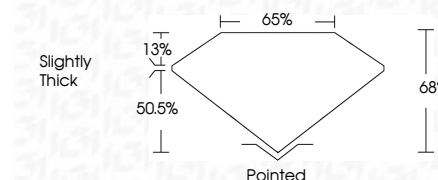
D E F G H I J Faint Very Light Light

CLARITY

FL IF VS 1-2 VS 1-2 SI 1-2 I 1-3
Flawless Internally Flawless Very Very Slightly Included Very Slightly Included Slightly Included Included



January 26, 2026
IGI Report Number LG769622059
Description LABORATORY GROWN DIAMOND
Shape and Cutting Style CUT CORNERED RECTANGULAR MODIFIED BRILLIANT
Measurements 10.14 X 7.03 X 4.78 MM
GRADING RESULTS
Carat Weight 2.99 CARATS
Color Grade E
Clarity Grade VS 1



ADDITIONAL GRADING INFORMATION

Polish EXCELLENT
Symmetry EXCELLENT
Fluorescence NONE
Inscription(s) IGI LG769622059
Comments: This Laboratory Grown Diamond was created by Chemical Vapor Deposition (CVD) growth process.
Type IIa



January 26, 2026
IGI Report No LG769622059
CUT CORNERED RECT. MODIFIED BRILLIANT
10.14 X 7.03 X 4.78 MM
Carat Weight 2.99 CARATS
Color Grade E
Clarity Grade VS 1
Depth 68%
Table 50.5%
Girdle Slightly Thick
Culet Pointed
Polish EXCELLENT
Symmetry EXCELLENT
Fluorescence NONE
Inscription(s) IGI LG769622059

Comments: This Laboratory Grown Diamond was created by Chemical Vapor Deposition (CVD) growth process.
Type IIa