



**ELECTRONIC COPY**

LG769620525  
Report verification at igi.org



February 1, 2026

IGI Report Number **LG769620525**

Description **LABORATORY GROWN DIAMOND**

Shape and Cutting Style **ROUND BRILLIANT**

Measurements **6.43 - 6.45 X 3.99 MM**

**GRADING RESULTS**

Carat Weight **1.02 CARAT**

Color Grade **E**

Clarity Grade **SI 1**

Cut Grade **IDEAL**

February 1, 2026

IGI Report Number **LG769620525**

Description **LABORATORY GROWN DIAMOND**

Shape and Cutting Style **ROUND BRILLIANT**

Measurements **6.43 - 6.45 X 3.99 MM**

**GRADING RESULTS**

Carat Weight **1.02 CARAT**

Color Grade **E**

Clarity Grade **SI 1**

Cut Grade **IDEAL**

**ADDITIONAL GRADING INFORMATION**

Polish **EXCELLENT**

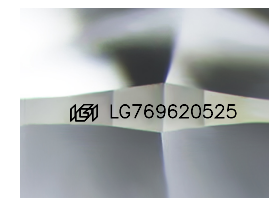
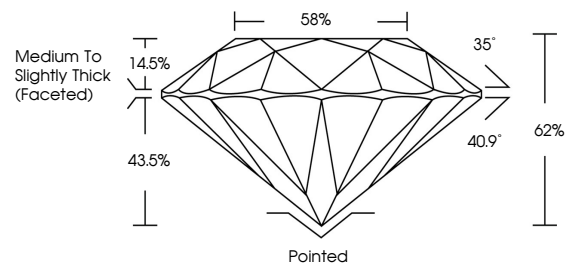
Symmetry **EXCELLENT**

Fluorescence **NONE**

Inscription(s) **IGI LG769620525**

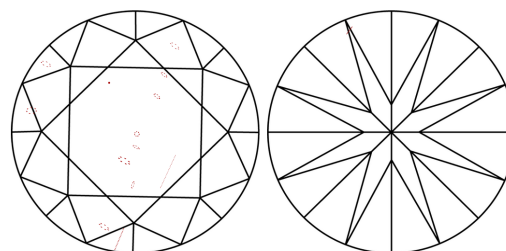
Comments: This Laboratory Grown Diamond was created by Chemical Vapor Deposition (CVD) growth process. Type IIa

**PROPORTIONS**



Sample Image Used

**CLARITY CHARACTERISTICS**



**KEY TO SYMBOLS**

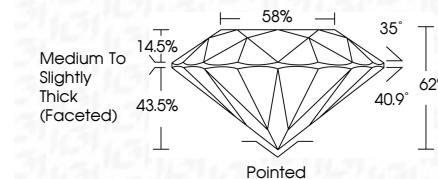
Red symbols indicate internal characteristics.  
Green symbols indicate external characteristics.

**COLOR**

D E F G H I J Faint Very Light Light

**CLARITY**

FL	IF	VS <sup>1-2</sup>	VS <sup>1-2</sup>	SI <sup>1-2</sup>	I <sup>1-3</sup>
Flawless	Internally Flawless	Very Very Slightly Included	Very Slightly Included	Slightly Included	Included



**ADDITIONAL GRADING INFORMATION**

Polish **EXCELLENT**

Symmetry **EXCELLENT**

Fluorescence **NONE**

Inscription(s) **IGI LG769620525**

Comments: This Laboratory Grown Diamond was created by Chemical Vapor Deposition (CVD) growth process. Type IIa



**IGI**



February 1, 2026	IGI Report No LG769620525	ROUND BRILLIANT	6.43 - 6.45 X 3.99 MM	1.02 CARAT	E	SI 1	IDEAL	62%	88%	Medium To Slightly Thick (Faceted)	Pointed	EXCELLENT	EXCELLENT	NONE	IGI LG769620525
Cutter	Polish	Symmetry	Fluorescence	Inscription(s)											

Comments: This Laboratory Grown Diamond was created by Chemical Vapor Deposition (CVD) growth process. Type IIa