



January 27, 2026

IGI Report Number **LG769620476**

**ROUND BRILLIANT  
LABORATORY GROWN DIAMOND**  
6.31 - 6.35 X 3.91 MM

Carat Weight	<b>0.97 CARAT</b>
Color Grade	<b>E</b>
Clarity Grade	<b>VVS 2</b>
Cut Grade	<b>EXCELLENT</b>
Polish	<b>EXCELLENT</b>
Symmetry	<b>EXCELLENT</b>
Fluorescence	<b>NONE</b>
Inscription(s)	<b>IGI LG769620476</b>

Comments: This Laboratory Grown Diamond was created by Chemical Vapor Deposition (CVD) growth process. Type IIa

**LABORATORY GROWN DIAMOND REPORT**

January 27, 2026

IGI Report Number

**LG769620476**

Description

**LABORATORY GROWN DIAMOND**

Shape and Cutting Style

**ROUND BRILLIANT**

Measurements

**6.31 - 6.35 X 3.91 MM**

**GRADING RESULTS**

Carat Weight

**0.97 CARAT**

Color Grade

**E**

Clarity Grade

**VVS 2**

Cut Grade

**EXCELLENT**

**ADDITIONAL GRADING INFORMATION**

Polish

**EXCELLENT**

Symmetry

**EXCELLENT**

Fluorescence

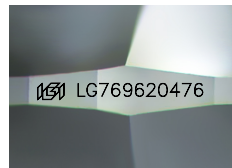
**NONE**

Inscription(s)

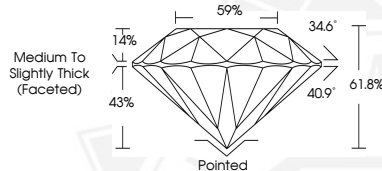
**IGI LG769620476**

Comments: This Laboratory Grown Diamond was created by Chemical Vapor Deposition (CVD) growth process.

Type IIa



Sample Image Used



January 27, 2026

IGI Report Number **LG769620476**

**ROUND BRILLIANT  
LABORATORY GROWN DIAMOND**  
6.31 - 6.35 X 3.91 MM

Carat Weight	<b>0.97 CARAT</b>
Color Grade	<b>E</b>
Clarity Grade	<b>VVS 2</b>
Cut Grade	<b>EXCELLENT</b>
Polish	<b>EXCELLENT</b>
Symmetry	<b>EXCELLENT</b>
Fluorescence	<b>NONE</b>
Inscription(s)	<b>IGI LG769620476</b>

Comments: This Laboratory Grown Diamond was created by Chemical Vapor Deposition (CVD) growth process. Type IIa



THIS DOCUMENT WAS PRODUCED WITH THE FOLLOWING SECURITY MEASURES: SPECIAL DOCUMENT PAPER, INK SCREENS, WATERMARK, BACKGROUND DESIGNS, HOLOGRAM AND OTHER SECURITY FEATURES NOT LISTED AND DO EXCEED DOCUMENT SECURITY INDUSTRY GUIDELINES.