



ELECTRONIC COPY

LG769619107
Report verification at igi.org



February 1, 2026

IGI Report Number **LG769619107**

Description **LABORATORY GROWN DIAMOND**

Shape and Cutting Style **ROUND BRILLIANT**

Measurements **7.28 - 7.31 X 4.51 MM**

GRADING RESULTS

Carat Weight **1.46 CARAT**

Color Grade **D**

Clarity Grade **VS 2**

Cut Grade **IDEAL**

February 1, 2026

IGI Report Number **LG769619107**

Description **LABORATORY GROWN DIAMOND**

Shape and Cutting Style **ROUND BRILLIANT**

Measurements **7.28 - 7.31 X 4.51 MM**

GRADING RESULTS

Carat Weight **1.46 CARAT**

Color Grade **D**

Clarity Grade **VS 2**

Cut Grade **IDEAL**

ADDITIONAL GRADING INFORMATION

Polish **EXCELLENT**

Symmetry **EXCELLENT**

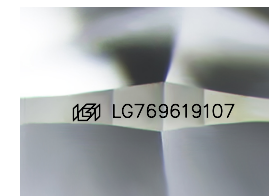
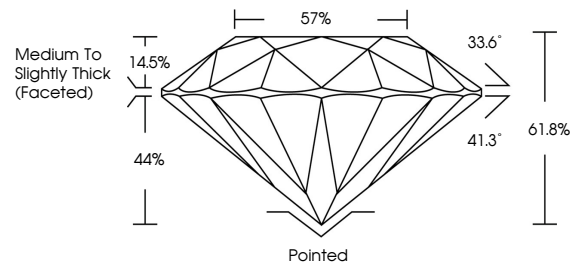
Fluorescence **NONE**

Inscription(s) **LG769619107**

Comments: As Grown - No indication of post-growth treatment.

This Laboratory Grown Diamond was created by High Pressure High Temperature (HPHT) growth process. Type II

PROPORTIONS



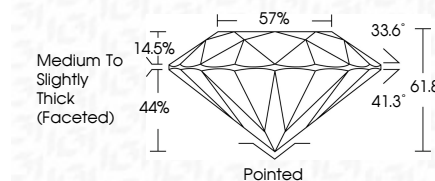
Sample Image Used

COLOR

D E F G H I J Faint Very Light Light

CLARITY

FL	IF	VS ¹⁻²	VS ¹⁻²	SI ¹⁻²	I ¹⁻³
Flawless	Internally Flawless	Very Very Slightly Included	Very Slightly Included	Slightly Included	Included



ADDITIONAL GRADING INFORMATION

Polish **EXCELLENT**

Symmetry **EXCELLENT**

Fluorescence **NONE**

Inscription(s) **LG769619107**

Comments: As Grown - No indication of post-growth treatment.

This Laboratory Grown Diamond was created by High Pressure High Temperature (HPHT) growth process. Type II



IGI



February 1, 2026	IGI Report No LG769619107	ROUND BRILLIANT	7.28 - 7.31 X 4.51 MM	1.46 CARAT	D	VS 2	IDEAL	61.8%	57%	Medium To Slightly Thick (Faceted)	Pointed	EXCELLENT	EXCELLENT	NONE	LG769619107
Cut	Polish	Symmetry	Fluorescence	Inscription(s)	Comments: As Grown - No indication of post-growth treatment. This Laboratory Grown Diamond was created by High Pressure High Temperature (HPHT) growth process. Type II										