



ELECTRONIC COPY

LABORATORY GROWN DIAMOND REPORT

LG769618917
Report verification at igi.org

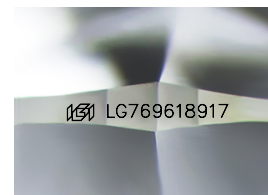
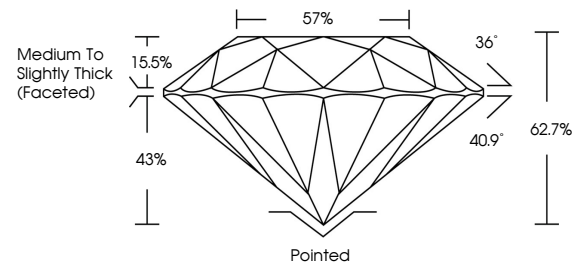
| | |
|-------------------------|--------------------------|
| February 5, 2026 | |
| IGI Report Number | LG769618917 |
| Description | LABORATORY GROWN DIAMOND |
| Shape and Cutting Style | ROUND BRILLIANT |
| Measurements | 6.43 - 6.45 X 4.04 MM |
| GRADING RESULTS | |
| Carat Weight | 1.04 CARAT |
| Color Grade | E |
| Clarity Grade | VS 1 |
| Cut Grade | EXCELLENT |

ADDITIONAL GRADING INFORMATION

| | |
|----------------|---|
| Polish | EXCELLENT |
| Symmetry | EXCELLENT |
| Fluorescence | NONE |
| Inscription(s) |  LG769618917 |

Comments: As Grown - No indication of post-growth treatment.
This Laboratory Grown Diamond was created by High Pressure High Temperature (HPHT) growth process.
Type II

PROPORTIONS



Sample Image Used

COLOR

D E F G H I J Faint Very Light Light

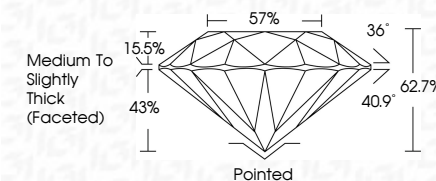
CLARITY

| FL | IF | VVS ¹⁻² | VS ¹⁻² | SI ¹⁻² | I ¹⁻³ |
|----------|---------------------|-----------------------------|------------------------|-------------------|------------------|
| Flawless | Internally Flawless | Very Very Slightly Included | Very Slightly Included | Slightly Included | Included |

LABORATORY GROWN DIAMOND REPORT



| | |
|-------------------------|--------------------------|
| February 5, 2026 | |
| IGI Report Number | LG769618917 |
| Description | LABORATORY GROWN DIAMOND |
| Shape and Cutting Style | ROUND BRILLIANT |
| Measurements | 6.43 - 6.45 X 4.04 MM |
| GRADING RESULTS | |
| Carat Weight | 1.04 CARAT |
| Color Grade | E |
| Clarity Grade | VS 1 |
| Cut Grade | EXCELLENT |



ADDITIONAL GRADING INFORMATION

| | |
|--|----------------------------|
| Polish | EXCELLENT |
| Symmetry | EXCELLENT |
| Fluorescence | NONE |
| Inscription(s) | (G) LG769618917 |
| <p>Comments: As Grown - No indication of post-growth treatment.</p> <p>This Laboratory Grown Diamond was created by High Pressure High Temperature (HPHT) growth process.</p> <p>Type II</p> | |



© IGI 2020, International Gemological Institute

FD - 10 20



THIS DOCUMENT WAS PRODUCED WITH THE FOLLOWING SECURITY MEASURES: SPECIAL DOCUMENT PAPER, INK SCREENS, WATERMARK, BACKGROUND DESIGNS, HOLOGRAM AND OTHER SECURITY FEATURES NOT LISTED AND DO EXCEED DOCUMENT SECURITY INDUSTRY GUIDELINES

www.igi.org

February 5, 2026
IGI Report No LG769618917
ROUND BRILLIANT

| | | |
|----------------------|---------------|------------------------------------|
| 6.43 - 6.45 X .04 MM | Carat Weight | 1.04 CARAT |
| | Color Grade | E |
| | Clarity Grade | VS 1 |
| | Cut Grade | EXCELLENT |
| | Depth | 62.7% |
| | Table | 57% |
| | Girdle | Medium to Slightly Thick (faceted) |
| | Culet | Pointed |
| | Polish | EXCELLENT |
| | Symmetry | EXCELLENT |
| | Fluorescence | NONE |
| | Reported by | Jan 12/24/2012 |

Comments:
As Grown - No indication of post-growth treatment
This Laboratory Grown Diamond was created by High Pressure High Temperature (HPHT) growth process.