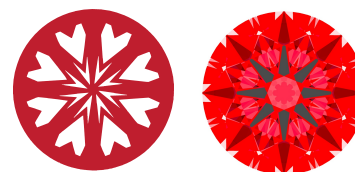




Light Performance Grade: Exceptional



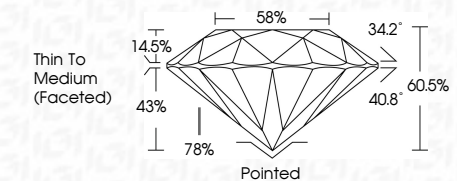
Structured Light Environment Representation



CLARITY table with categories: FL, IF, VS 1-2, VS 1-2, SI 1-2, I 1-3 and corresponding descriptions.



January 24, 2026
IGI Report Number: LG769613462
Description: LABORATORY GROWN DIAMOND
Shape and Cutting Style: ROUND BRILLIANT
Measurements: 9.52 - 9.58 X 5.77 MM
GRADING RESULTS
Carat Weight: 3.19 CARATS
Color Grade: E
Clarity Grade: VVS 2
Cut Grade: IDEAL



ADDITIONAL GRADING INFORMATION
Polish: EXCELLENT
Symmetry: EXCELLENT
Fluorescence: NONE
Inscription(s): IGI LG769613462
Comments: HEARTS & ARROWS
This Laboratory Grown Diamond was created by Chemical Vapor Deposition (CVD) growth process. Type IIa



January 24, 2026
IGI Report No LG769613462
ROUND BRILLIANT
9.52 - 9.58 X 5.77 MM
3.19 CARATS
E
VVS 2
IDEAL
60.5%
58%
Thin To Medium (Faceted)
Pointed
EXCELLENT
EXCELLENT
NONE
IGI LG769613462
Comments: HEARTS & ARROWS
This Laboratory Grown Diamond was created by Chemical Vapor Deposition (CVD) growth process. Type IIa

ELECTRONIC COPY
LABORATORY GROWN DIAMOND REPORT

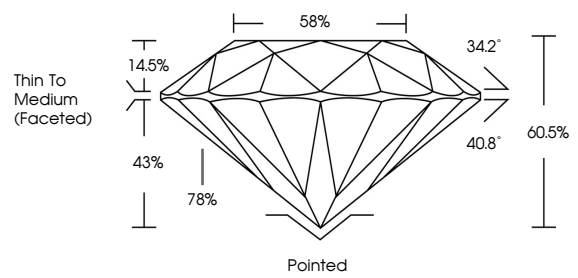
January 24, 2026
IGI Report Number: LG769613462
Description: LABORATORY GROWN DIAMOND
Shape and Cutting Style: ROUND BRILLIANT
Measurements: 9.52 - 9.58 x 5.77 mm

GRADING RESULTS
Carat Weight: 3.19 CARATS
Color Grade: E
Clarity Grade: VVS 2
Cut Grade: IDEAL

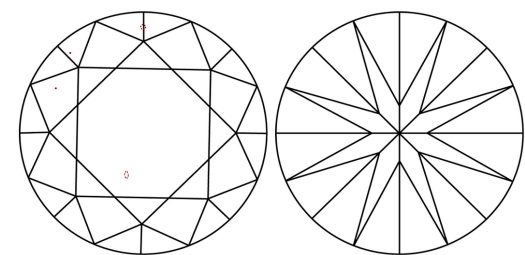
ADDITIONAL GRADING INFORMATION
Polish: EXCELLENT
Symmetry: EXCELLENT
Fluorescence: NONE
Inscription(s): IGI LG769613462

Comments: HEARTS & ARROWS
This Laboratory Grown Diamond was created by Chemical Vapor Deposition (CVD) growth process. Type IIa

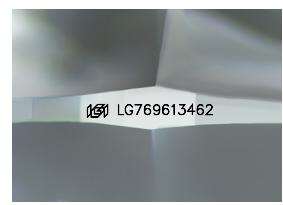
PROPORTIONS



CLARITY CHARACTERISTICS



KEY TO SYMBOLS
Red symbols indicate internal characteristics.
Green symbols indicate external characteristics.



Sample Image Used

