



January 23, 2026
IGI Report Number LG769613316
ROUND BRILLIANT
LABORATORY GROWN DIAMOND
4.23 - 4.29 X 2.60 MM
 Carat Weight **0.28 CARAT**
 Color Grade **D**
 Clarity Grade **SI 1**
 Cut Grade **IDEAL**
 Polish **EXCELLENT**
 Symmetry **EXCELLENT**
 Fluorescence **NONE**
 Inscription(s) **IGI LG769613316**

LABORATORY GROWN DIAMOND REPORT

January 23, 2026
 IGI Report Number **LG769613316**
 Description **LABORATORY GROWN DIAMOND**
 Shape and Cutting Style **ROUND BRILLIANT**
 Measurements **4.23 - 4.29 X 2.60 MM**

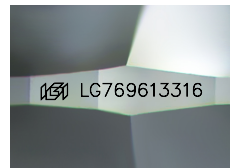
GRADING RESULTS

Carat Weight **0.28 CARAT**
 Color Grade **D**
 Clarity Grade **SI 1**
 Cut Grade **IDEAL**

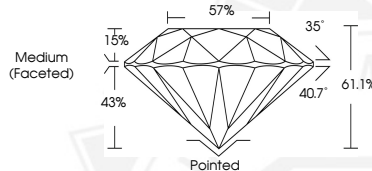
ADDITIONAL GRADING INFORMATION

Polish **EXCELLENT**
 Symmetry **EXCELLENT**
 Fluorescence **NONE**
 Inscription(s) **IGI LG769613316**

Comments: This Laboratory Grown Diamond was created by Chemical Vapor Deposition (CVD) growth process. Type IIa



Sample Image Used



January 23, 2026
IGI Report Number LG769613316
ROUND BRILLIANT
LABORATORY GROWN DIAMOND
4.23 - 4.29 X 2.60 MM
 Carat Weight **0.28 CARAT**
 Color Grade **D**
 Clarity Grade **SI 1**
 Cut Grade **IDEAL**
 Polish **EXCELLENT**
 Symmetry **EXCELLENT**
 Fluorescence **NONE**
 Inscription(s) **IGI LG769613316**

Comments: This Laboratory Grown Diamond was created by Chemical Vapor Deposition (CVD) growth process. Type IIa



THIS DOCUMENT WAS PRODUCED WITH THE FOLLOWING SECURITY MEASURES: SPECIAL DOCUMENT PAPER, INK SCREENS, WATERMARK, BACKGROUND DESIGNS, HOLOGRAM AND OTHER SECURITY FEATURES NOT LISTED AND DO EXCEED DOCUMENT SECURITY INDUSTRY GUIDELINES.