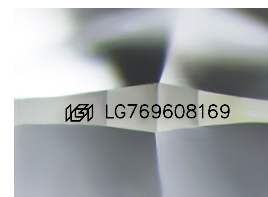
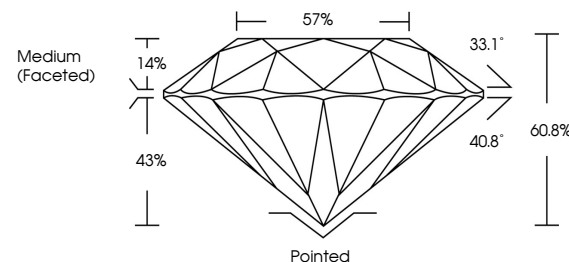


ELECTRONIC COPY

LABORATORY GROWN DIAMOND REPORT

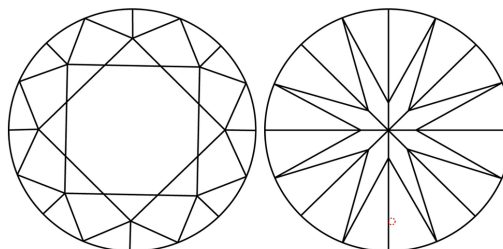
LG769608169
Report verification at igi.org

PROPORTIONS



Sample Image Used

CLARITY CHARACTERISTICS



KEY TO SYMBOLS

Red symbols indicate internal characteristics.
Green symbols indicate external characteristics.

COLOR

D E F G H I J Faint Very Light Light

CLARITY

FL	IF	VVS ¹⁻²	VS ¹⁻²	SI ¹⁻²	I ¹⁻³
Flawless	Internally Flawless	Very Very Slightly Included	Very Slightly Included	Slightly Included	Included

LABORATORY GROWN DIAMOND REPORT

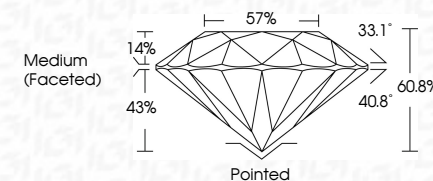


January 24, 2026	
IGI Report Number	LG769608169
Description	LABORATORY GROWN DIAMOND

Shape and Cutting Style	ROUND BRILLIANT
Measurements	8.54 - 8.60 X 5.21 MM

GRADING RESULTS

Carat Weight	2.34 CARATS
Color Grade	D
Clarity Grade	VVS 1
Cut Grade	IDEAL



ADDITIONAL GRADING INFORMATION

Polish	EXCELLENT
Symmetry	EXCELLENT
Fluorescence	NONE
Inscription(s)	 LG769608169
Comments: As Grown - No indication of post-growth treatment.	
This Laboratory Grown Diamond was created by High Pressure High Temperature (HPHT) growth process.	
Type IIA	



© IGI 2020, International Gemological Institute

FD - 10 20

January 24, 2026
 CGI Report No LG769608169
 BOUND BRILLIANT

6.54 - 8.60 X 5.21 MM	2.34 CARATS	D
Carat Weight	VVS 1	Pointed
Color Grade	IDPAI	EXCELLENT
Clarity Grade	60.9%	EXCELLENT
Cut Grade	57%	NONE
Depth		
Table		
Girdle	Medium (Faceted)	
Culet		
Polish		
Symmetry		
Fluorescence		

Comments:
As Grown - No indication of post-growth treatment.