



**ELECTRONIC COPY**

LG769604471  
Report verification at igi.org



January 26, 2026

IGI Report Number **LG769604471**

Description **LABORATORY GROWN DIAMOND**

Shape and Cutting Style **ROUND BRILLIANT**

Measurements **9.66 - 9.70 X 5.70 MM**

**GRADING RESULTS**

Carat Weight **3.29 CARATS**

Color Grade **F**

Clarity Grade **VS 2**

Cut Grade **EXCELLENT**

January 26, 2026  
IGI Report Number **LG769604471**  
Description **LABORATORY GROWN DIAMOND**  
Shape and Cutting Style **ROUND BRILLIANT**  
Measurements **9.66 - 9.70 X 5.70 MM**

**GRADING RESULTS**

Carat Weight **3.29 CARATS**

Color Grade **F**

Clarity Grade **VS 2**

Cut Grade **EXCELLENT**

**ADDITIONAL GRADING INFORMATION**

Polish **EXCELLENT**

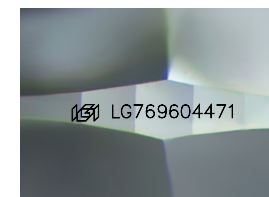
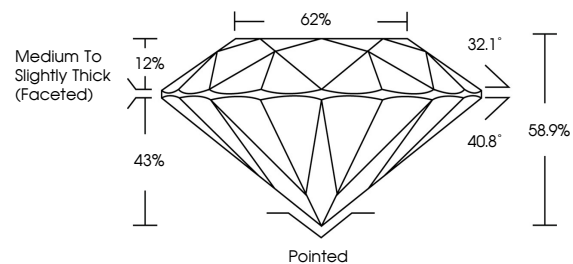
Symmetry **EXCELLENT**

Fluorescence **NONE**

Inscription(s) **IGI LG769604471**

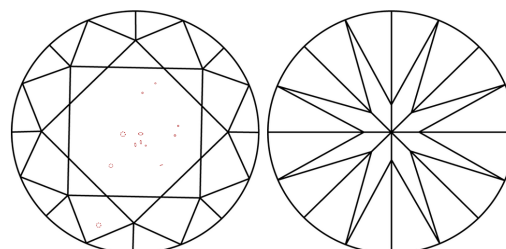
Comments: This Laboratory Grown Diamond was created by Chemical Vapor Deposition (CVD) growth process.  
Type IIa

**PROPORTIONS**



Sample Image Used

**CLARITY CHARACTERISTICS**



**KEY TO SYMBOLS**

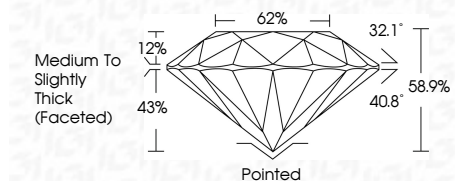
Red symbols indicate internal characteristics.  
Green symbols indicate external characteristics.

**COLOR**

D E F G H I J Faint Very Light Light

**CLARITY**

FL	IF	VS <sup>1-2</sup>	VS <sup>1-2</sup>	SI <sup>1-2</sup>	I <sup>1-3</sup>
Flawless	Internally Flawless	Very Very Slightly Included	Very Slightly Included	Slightly Included	Included



**ADDITIONAL GRADING INFORMATION**

Polish **EXCELLENT**

Symmetry **EXCELLENT**

Fluorescence **NONE**

Inscription(s) **IGI LG769604471**

Comments: This Laboratory Grown Diamond was created by Chemical Vapor Deposition (CVD) growth process.  
Type IIa



**IGI**



January 26, 2026  
IGI Report No LG769604471  
ROUND BRILLIANT

3.29 CARATS  
Carat Weight  
Color Grade F  
Clarity Grade VS 2  
Depth 58.9%  
Table 62%  
Girdle Medium To Slightly Thick (Faceted)

Culet Pointed  
Polish EXCELLENT  
Symmetry EXCELLENT  
Fluorescence NONE  
Inscriptions(s) IGI LG769604471

Comments: This Laboratory Grown Diamond was created by Chemical Vapor Deposition (CVD) growth process.  
Type IIa