



ELECTRONIC COPY

LABORATORY GROWN DIAMOND REPORT

February 13, 2026  
IGI Report Number LG769603793  
Description LABORATORY GROWN DIAMOND  
Shape and Cutting Style EMERALD CUT  
Measurements 16.52 X 10.69 X 7.12 MM

GRADING RESULTS

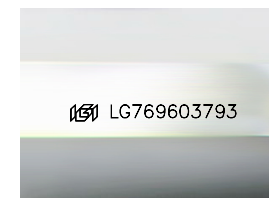
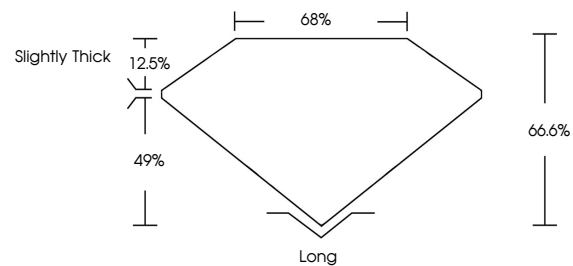
Carat Weight 13.05 CARATS  
Color Grade G  
Clarity Grade VVS 2

ADDITIONAL GRADING INFORMATION

Polish EXCELLENT  
Symmetry EXCELLENT  
Fluorescence NONE  
Inscription(s) IGI LG769603793

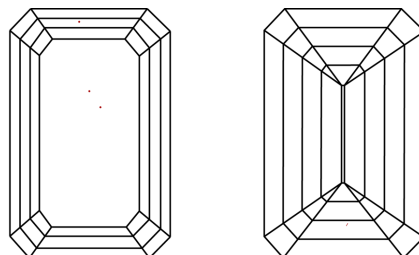
Comments: This Laboratory Grown Diamond was created by Chemical Vapor Deposition (CVD) growth process. Type IIa

PROPORTIONS



Sample Image Used

CLARITY CHARACTERISTICS



KEY TO SYMBOLS

Red symbols indicate internal characteristics.  
Green symbols indicate external characteristics.

COLOR

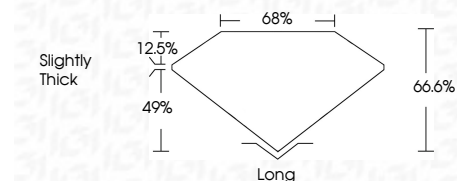
D E F G H I J Faint Very Light Light

CLARITY

FL IF VS<sup>1-2</sup> VS<sup>1-2</sup> SI<sup>1-2</sup> I<sup>1-3</sup>  
Flawless Internally Flawless Very Very Slightly Included Very Slightly Included Slightly Included Included



February 13, 2026  
IGI Report Number LG769603793  
Description LABORATORY GROWN DIAMOND  
Shape and Cutting Style EMERALD CUT  
Measurements 16.52 X 10.69 X 7.12 MM  
GRADING RESULTS  
Carat Weight 13.05 CARATS  
Color Grade G  
Clarity Grade VVS 2



ADDITIONAL GRADING INFORMATION

Polish EXCELLENT  
Symmetry EXCELLENT  
Fluorescence NONE  
Inscription(s) IGI LG769603793  
Comments: This Laboratory Grown Diamond was created by Chemical Vapor Deposition (CVD) growth process. Type IIa



February 13, 2026  
IGI Report No LG769603793  
EMERALD CUT  
13.05 CARATS G  
16.52 X 10.69 X 7.12 MM  
Carat Weight  
Color Grade  
Clarity Grade  
Depth  
Table  
Girdle  
Slightly Thick  
Culet  
Polish  
Symmetry  
Fluorescence  
Inscription(s)  
Long  
EXCELLENT  
EXCELLENT  
NONE  
IGI LG769603793  
Comments: This Laboratory Grown Diamond was created by Chemical Vapor Deposition (CVD) growth process. Type IIa