



**ELECTRONIC COPY**

LG769601809  
Report verification at igi.org



February 16, 2026

IGI Report Number **LG769601809**

Description **LABORATORY GROWN DIAMOND**

Shape and Cutting Style **OVAL BRILLIANT**

Measurements **9.31 X 6.53 X 4.09 MM**

**GRADING RESULTS**

Carat Weight **1.56 CARAT**

Color Grade **G**

Clarity Grade **VS 1**

February 16, 2026

IGI Report Number **LG769601809**

Description **LABORATORY GROWN DIAMOND**

Shape and Cutting Style **OVAL BRILLIANT**

Measurements **9.31 X 6.53 X 4.09 MM**

**GRADING RESULTS**

Carat Weight **1.56 CARAT**

Color Grade **G**

Clarity Grade **VS 1**

**ADDITIONAL GRADING INFORMATION**

Polish **EXCELLENT**

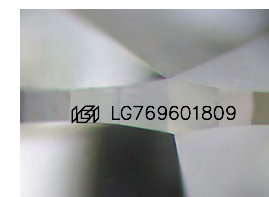
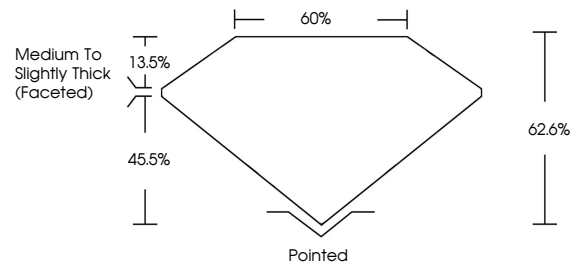
Symmetry **EXCELLENT**

Fluorescence **NONE**

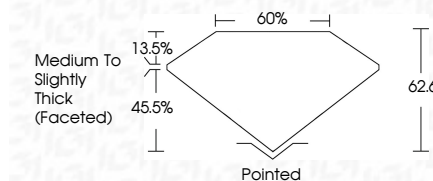
Inscription(s) **IGI LG769601809**

Comments: This Laboratory Grown Diamond was created by Chemical Vapor Deposition (CVD) growth process.  
Type IIa

**PROPORTIONS**



Sample Image Used



**COLOR**

D E F G H I J Faint Very Light Light

**CLARITY**

FL	IF	VS <sup>1-2</sup>	VS <sup>1-2</sup>	SI <sup>1-2</sup>	I <sup>1-3</sup>
Flawless	Internally Flawless	Very Very Slightly Included	Very Slightly Included	Slightly Included	Included

**ADDITIONAL GRADING INFORMATION**

Polish **EXCELLENT**

Symmetry **EXCELLENT**

Fluorescence **NONE**

Inscription(s) **IGI LG769601809**

Comments: This Laboratory Grown Diamond was created by Chemical Vapor Deposition (CVD) growth process.  
Type IIa



February 16, 2026  
IGI Report No LG769601809  
OVAL BRILLIANT  
9.31 X 6.53 X 4.09 MM  
Carat Weight 1.56 CARAT  
Color Grade G  
Clarity Grade VS 1  
Table 60%  
Depth 45.5%  
Girdle Medium to Slightly Thick (Faceted)  
Culet Pointed  
Polish EXCELLENT  
Symmetry EXCELLENT  
Fluorescence NONE  
Inscription(s) IGI LG769601809

Comments: This Laboratory Grown Diamond was created by Chemical Vapor Deposition (CVD) growth process.  
Type IIa