



ELECTRONIC COPY

LG769601316
Report verification at igi.org



February 10, 2026
IGI Report Number LG769601316
Description LABORATORY GROWN DIAMOND
Shape and Cutting Style ROUND BRILLIANT
Measurements 10.89 - 10.94 X 6.79 MM
GRADING RESULTS
Carat Weight 5.03 CARATS
Color Grade G
Clarity Grade VVS 2
Cut Grade EXCELLENT

February 10, 2026
IGI Report Number LG769601316
Description LABORATORY GROWN DIAMOND
Shape and Cutting Style ROUND BRILLIANT
Measurements 10.89 - 10.94 X 6.79 MM

GRADING RESULTS

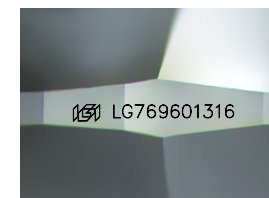
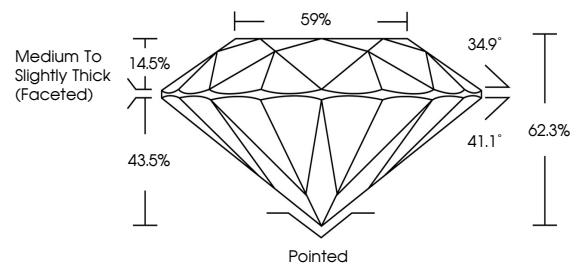
Carat Weight 5.03 CARATS
Color Grade G
Clarity Grade VVS 2
Cut Grade EXCELLENT

ADDITIONAL GRADING INFORMATION

Polish EXCELLENT
Symmetry EXCELLENT
Fluorescence NONE
Inscription(s) LG769601316

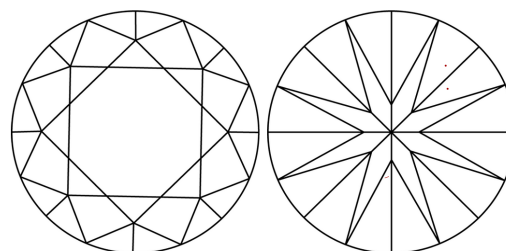
Comments: HEARTS & ARROWS
This Laboratory Grown Diamond was created by Chemical Vapor Deposition (CVD) growth process. Type IIa

PROPORTIONS



Sample Image Used

CLARITY CHARACTERISTICS



KEY TO SYMBOLS

Red symbols indicate internal characteristics.
Green symbols indicate external characteristics.

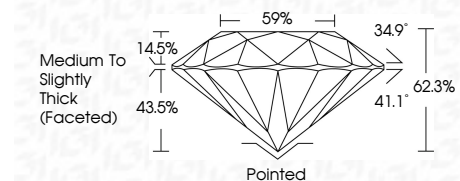


COLOR

D E F G H I J Faint Very Light Light

CLARITY

Table with columns: FL, IF, VS 1-2, VS 1-2, SI 1-2, I 1-3. Row: Flawless, Internally Flawless, Very Very Slightly Included, Very Slightly Included, Slightly Included, Included



ADDITIONAL GRADING INFORMATION

Polish EXCELLENT
Symmetry EXCELLENT
Fluorescence NONE
Inscription(s) LG769601316
Comments: HEARTS & ARROWS
This Laboratory Grown Diamond was created by Chemical Vapor Deposition (CVD) growth process. Type IIa



Vertical text block containing report details: February 10, 2026, IGI Report No LG769601316, ROUND BRILLIANT, 10.89 - 10.94 X 6.79 MM, 5.03 CARATS, G, VVS 2, EXCELLENT, 62.3%, 59%, Medium To Slightly Thick (Faceted), Pointed, EXCELLENT, EXCELLENT, NONE, LG769601316, Comments: HEARTS & ARROWS, This Laboratory Grown Diamond was created by Chemical Vapor Deposition (CVD) growth process. Type IIa