



ELECTRONIC COPY

LG769601248
Report verification at igi.org



February 12, 2026

IGI Report Number **LG769601248**

Description **LABORATORY GROWN DIAMOND**

Shape and Cutting Style **ROUND BRILLIANT**

Measurements **9.11 - 9.16 X 5.57 MM**

GRADING RESULTS

Carat Weight **2.85 CARATS**

Color Grade **G**

Clarity Grade **VS 1**

Cut Grade **IDEAL**

February 12, 2026

IGI Report Number **LG769601248**

Description **LABORATORY GROWN DIAMOND**

Shape and Cutting Style **ROUND BRILLIANT**

Measurements **9.11 - 9.16 X 5.57 MM**

GRADING RESULTS

Carat Weight **2.85 CARATS**

Color Grade **G**

Clarity Grade **VS 1**

Cut Grade **IDEAL**

ADDITIONAL GRADING INFORMATION

Polish **EXCELLENT**

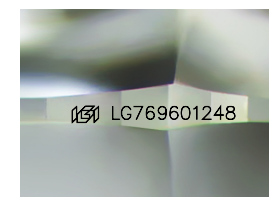
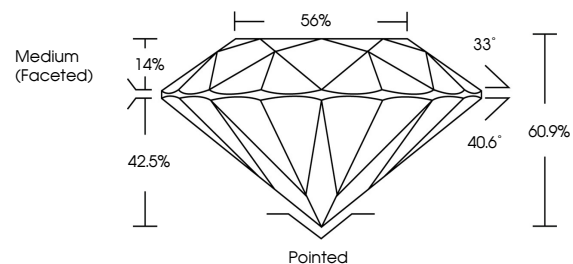
Symmetry **EXCELLENT**

Fluorescence **NONE**

Inscription(s) **LG769601248**

Comments: This Laboratory Grown Diamond was created by Chemical Vapor Deposition (CVD) growth process. Type IIa

PROPORTIONS



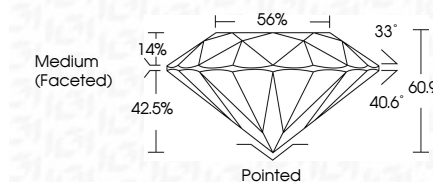
Sample Image Used

COLOR

D E F G H I J Faint Very Light Light

CLARITY

FL	IF	VS ¹⁻²	VS ¹⁻²	SI ¹⁻²	I ¹⁻³
Flawless	Internally Flawless	Very Very Slightly Included	Very Slightly Included	Slightly Included	Included



ADDITIONAL GRADING INFORMATION

Polish **EXCELLENT**

Symmetry **EXCELLENT**

Fluorescence **NONE**

Inscription(s) **LG769601248**

Comments: This Laboratory Grown Diamond was created by Chemical Vapor Deposition (CVD) growth process. Type IIa



IGI



February 12, 2026
IGI Report No LG769601248
ROUND BRILLIANT

9.11 - 9.16 X 5.57 MM
2.85 CARATS
Color Grade **G**
Clarity Grade **VS 1**
Depth **60.9%**
Table **14%**
Girdle **Medium (Faceted)**

Culet **Pointed**
Polish **EXCELLENT**
Symmetry **EXCELLENT**
Fluorescence **NONE**
Inscriptions(s) **LG769601248**

Comments: This Laboratory Grown Diamond was created by Chemical Vapor Deposition (CVD) growth process. Type IIa