



**ELECTRONIC COPY**

LG768699750  
Report verification at igi.org



February 3, 2026

IGI Report Number **LG768699750**

Description **LABORATORY GROWN DIAMOND**

Shape and Cutting Style **EMERALD CUT**

Measurements **16.38 X 11.69 X 7.29 MM**

**GRADING RESULTS**

Carat Weight **15.53 CARATS**

Color Grade **FANCY VIVID GREEN**

Clarity Grade **VVS 2**

February 3, 2026  
IGI Report Number **LG768699750**  
Description **LABORATORY GROWN DIAMOND**  
Shape and Cutting Style **EMERALD CUT**  
Measurements **16.38 X 11.69 X 7.29 MM**

**GRADING RESULTS**

Carat Weight **15.53 CARATS**

Color Grade **FANCY VIVID GREEN**

Clarity Grade **VVS 2**

**ADDITIONAL GRADING INFORMATION**

Polish **EXCELLENT**

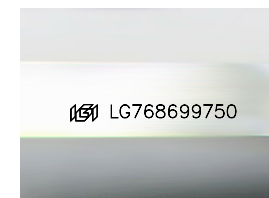
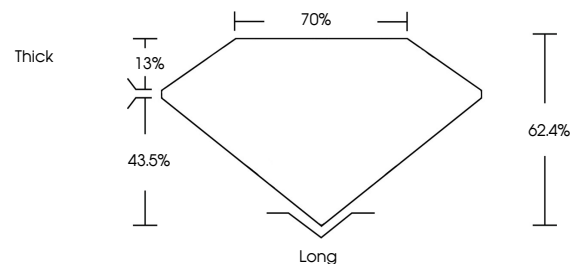
Symmetry **EXCELLENT**

Fluorescence **NONE**

Inscription(s) **LG768699750**

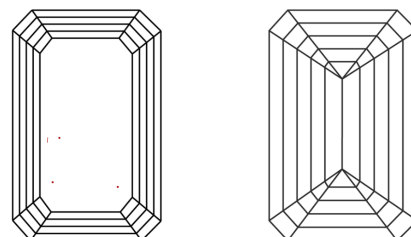
Comments: This Laboratory Grown Diamond was created by Chemical Vapor Deposition (CVD) growth process.  
Indications of post-growth treatment.

**PROPORTIONS**



Sample Image Used

**CLARITY CHARACTERISTICS**



**KEY TO SYMBOLS**

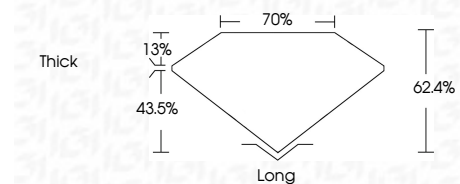
Red symbols indicate internal characteristics.  
Green symbols indicate external characteristics.

**COLOR**

D E F G H I J Faint Very Light Light

**CLARITY**

FL	IF	VVS <sup>1-2</sup>	VS <sup>1-2</sup>	SI <sup>1-2</sup>	I <sup>1-3</sup>
Flawless	Internally Flawless	Very Very Slightly Included	Very Slightly Included	Slightly Included	Included



**ADDITIONAL GRADING INFORMATION**

Polish **EXCELLENT**

Symmetry **EXCELLENT**

Fluorescence **NONE**

Inscription(s) **LG768699750**

Comments: This Laboratory Grown Diamond was created by Chemical Vapor Deposition (CVD) growth process.  
Indications of post-growth treatment.



**IGI**



February 3, 2026  
IGI Report No **LG768699750**  
**EMERALD CUT**  
**16.38 X 11.69 X 7.29 MM**  
Carat Weight **15.53 CARATS**  
Color Grade **FANCY VIVID GREEN**  
Clarity Grade **VVS 2**  
Depth **62.4%**  
Table **70%**  
Girdle **Thick**  
Culet **Long**  
Polish **EXCELLENT**  
Symmetry **EXCELLENT**  
Fluorescence **NONE**  
Inscription(s) **LG768699750**  
Comments: This Laboratory Grown Diamond was created by Chemical Vapor Deposition (CVD) growth process.  
Indications of post-growth treatment.