



ELECTRONIC COPY

LG768699726
Report verification at igi.org



February 2, 2026

IGI Report Number **LG768699726**

Description **LABORATORY GROWN DIAMOND**

Shape and Cutting Style **ROUND BRILLIANT**

Measurements **8.45 - 8.49 X 5.26 MM**

GRADING RESULTS

Carat Weight **2.33 CARATS**

Color Grade **FANCY YELLOW**

Clarity Grade **VS 1**

Cut Grade **IDEAL**

February 2, 2026

IGI Report Number **LG768699726**

Description **LABORATORY GROWN DIAMOND**

Shape and Cutting Style **ROUND BRILLIANT**

Measurements **8.45 - 8.49 X 5.26 MM**

GRADING RESULTS

Carat Weight **2.33 CARATS**

Color Grade **FANCY YELLOW**

Clarity Grade **VS 1**

Cut Grade **IDEAL**

ADDITIONAL GRADING INFORMATION

Polish **EXCELLENT**

Symmetry **EXCELLENT**

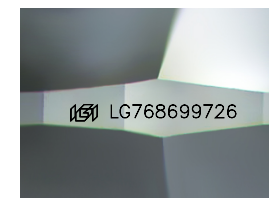
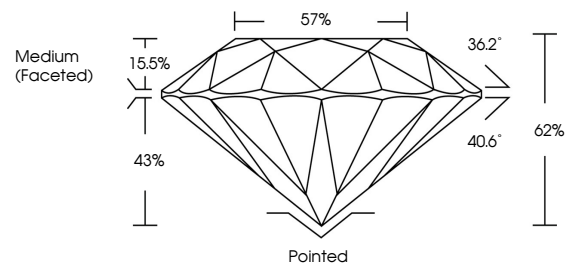
Fluorescence **VERY SLIGHT**

Inscription(s) **IGI LG768699726**

Comments: This Laboratory Grown Diamond was created by Chemical Vapor Deposition (CVD) growth process.

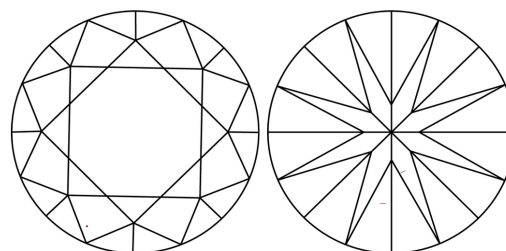
Indications of post-growth treatment.

PROPORTIONS



Sample Image Used

CLARITY CHARACTERISTICS



KEY TO SYMBOLS

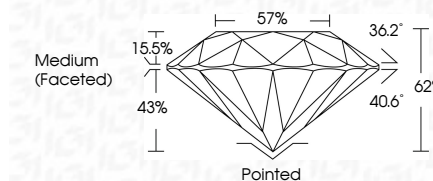
Red symbols indicate internal characteristics.
Green symbols indicate external characteristics.

COLOR

D E F G H I J Faint Very Light Light

CLARITY

FL	IF	VS ¹⁻²	VS ¹⁻²	SI ¹⁻²	I ¹⁻³
Flawless	Internally Flawless	Very Very Slightly Included	Very Slightly Included	Slightly Included	Included



ADDITIONAL GRADING INFORMATION

Polish **EXCELLENT**

Symmetry **EXCELLENT**

Fluorescence **VERY SLIGHT**

Inscription(s) **IGI LG768699726**

Comments: This Laboratory Grown Diamond was created by Chemical Vapor Deposition (CVD) growth process. Indications of post-growth treatment.



IGI



February 2, 2026	2.33 CARATS	Pointed
IGI Report No LG768699726	FANCY YELLOW	EXCELLENT
ROUND BRILLIANT	VS 1	EXCELLENT
8.45 - 8.49 X 5.26 MM	IDEAL	VERY SLIGHT
Carat Weight	62%	VERY SLIGHT
Color Grade	57%	IGI LG768699726
Clarity Grade	Medium (Faceted)	
Cut Grade		
Depth		
Table		
Girdle		
Culet		
Polish		
Symmetry		
Fluorescence		
Inscription(s)		

Comments: This Laboratory Grown Diamond was created by Chemical Vapor Deposition (CVD) growth process. Indications of post-growth treatment.