



**INTERNATIONAL
GEMOLOGICAL
INSTITUTE**

ELECTRONIC COPY



February 12, 2026

IGI Report Number **LG768698959**

ROUND BRILLIANT

LABORATORY GROWN DIAMOND

6.12 - 6.20 X 4.08 MM

Carat Weight **0.99 CARAT**
Color Grade **FANCY LIGHT PINKISH BROWN**

Clarity Grade **SI 1**

Cut Grade **GOOD**

Polish **VERY GOOD**

Symmetry **VERY GOOD**

Fluorescence **VERY SLIGHT**

Inscription(s) **IGI LG768698959**

Comments: This Laboratory Grown Diamond was created by Chemical Vapor Deposition (CVD) growth process. Indications of post-growth treatment.

LABORATORY GROWN DIAMOND REPORT

February 12, 2026

IGI Report Number

LG768698959

Description

LABORATORY GROWN DIAMOND

Shape and Cutting Style

ROUND BRILLIANT

Measurements

6.12 - 6.20 X 4.08 MM

GRADING RESULTS

Carat Weight

0.99 CARAT

Color Grade

FANCY LIGHT PINKISH BROWN

Clarity Grade

SI 1

Cut Grade

GOOD

ADDITIONAL GRADING INFORMATION

Polish

VERY GOOD

Symmetry

VERY GOOD

Fluorescence

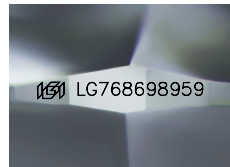
VERY SLIGHT

Inscription(s)

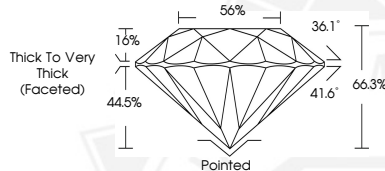
IGI LG768698959

Comments: This Laboratory Grown Diamond was created by Chemical Vapor Deposition (CVD) growth process.

Indications of post-growth treatment.



Sample Image Used



February 12, 2026

IGI Report Number **LG768698959**

ROUND BRILLIANT

LABORATORY GROWN DIAMOND

6.12 - 6.20 X 4.08 MM

Carat Weight **0.99 CARAT**

Color Grade **FANCY LIGHT PINKISH BROWN**

Clarity Grade **SI 1**

Cut Grade **GOOD**

Polish **VERY GOOD**

Symmetry **VERY GOOD**

Fluorescence **VERY SLIGHT**

Inscription(s) **IGI LG768698959**

Comments: This Laboratory Grown Diamond was created by Chemical Vapor Deposition (CVD) growth process. Indications of post-growth treatment.



THIS DOCUMENT WAS PRODUCED WITH THE FOLLOWING SECURITY MEASURES: SPECIAL DOCUMENT PAPER, INK SCREENS, WATERMARK, BACKGROUND DESIGNS, HOLOGRAM AND OTHER SECURITY FEATURES NOT LISTED AND DO EXCEED DOCUMENT SECURITY INDUSTRY GUIDELINES.

For terms & conditions and to verify this report, please visit www.igi.org