



ELECTRONIC COPY

LG768698944
Report verification at igi.org



January 30, 2026
IGI Report Number **LG768698944**
Description **LABORATORY GROWN DIAMOND**
Shape and Cutting Style **CUSHION MODIFIED BRILLIANT**
Measurements **7.34 X 5.96 X 4.31 MM**
GRADING RESULTS
Carat Weight **1.59 CARAT**
Color Grade **FANCY PINKISH BROWN**
Clarity Grade **SI 1**

LABORATORY GROWN DIAMOND REPORT

January 30, 2026
IGI Report Number **LG768698944**
Description **LABORATORY GROWN DIAMOND**
Shape and Cutting Style **CUSHION MODIFIED BRILLIANT**
Measurements **7.34 X 5.96 X 4.31 MM**

GRADING RESULTS

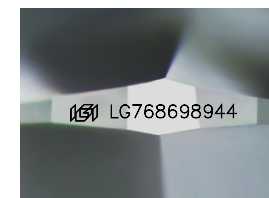
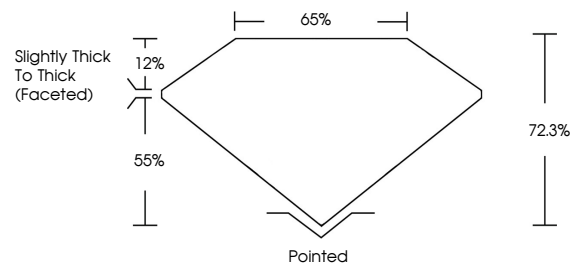
Carat Weight **1.59 CARAT**
Color Grade **FANCY PINKISH BROWN**
Clarity Grade **SI 1**

ADDITIONAL GRADING INFORMATION

Polish **EXCELLENT**
Symmetry **EXCELLENT**
Fluorescence **NONE**
Inscription(s) **IGI LG768698944**

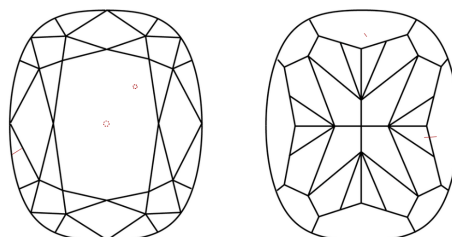
Comments: This Laboratory Grown Diamond was created by Chemical Vapor Deposition (CVD) growth process. Indications of post-growth treatment.

PROPORTIONS



Sample Image Used

CLARITY CHARACTERISTICS



KEY TO SYMBOLS

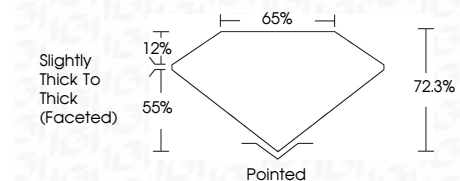
Red symbols indicate internal characteristics.
Green symbols indicate external characteristics.

COLOR

D E F G H I J Faint Very Light Light

CLARITY

FL	IF	VS ¹⁻²	VS ¹⁻²	SI ¹⁻²	I ¹⁻³
Flawless	Internally Flawless	Very Very Slightly Included	Very Slightly Included	Slightly Included	Included



ADDITIONAL GRADING INFORMATION

Polish **EXCELLENT**
Symmetry **EXCELLENT**
Fluorescence **NONE**
Inscription(s) **IGI LG768698944**
Comments: This Laboratory Grown Diamond was created by Chemical Vapor Deposition (CVD) growth process. Indications of post-growth treatment.



January 30, 2026
IGI Report No **LG768698944**
CUSHION MODIFIED BRILLIANT
Carat Weight **1.59 CARAT**
Color Grade **FANCY PINKISH BROWN**
Clarity Grade **SI 1**
Depth **72.3%**
Table **65%**
Girdle **Slightly Thick To Thick (Faceted)**
Culet **Pointed**
Polish **EXCELLENT**
Symmetry **EXCELLENT**
Fluorescence **NONE**
Inscription(s) **IGI LG768698944**
Comments: This Laboratory Grown Diamond was created by Chemical Vapor Deposition (CVD) growth process. Indications of post-growth treatment.