



**ELECTRONIC COPY**

LG768698936  
Report verification at igi.org



January 29, 2026

IGI Report Number **LG768698936**

Description **LABORATORY GROWN DIAMOND**

Shape and Cutting Style **EMERALD CUT**

Measurements **6.75 X 4.72 X 2.90 MM**

**GRADING RESULTS**

Carat Weight **1.00 CARAT**

Color Grade **FANCY PINK**

Clarity Grade **SI 1**

January 29, 2026  
IGI Report Number **LG768698936**  
Description **LABORATORY GROWN DIAMOND**  
Shape and Cutting Style **EMERALD CUT**  
Measurements **6.75 X 4.72 X 2.90 MM**

**GRADING RESULTS**

Carat Weight **1.00 CARAT**

Color Grade **FANCY PINK**

Clarity Grade **SI 1**

**ADDITIONAL GRADING INFORMATION**

Polish **EXCELLENT**

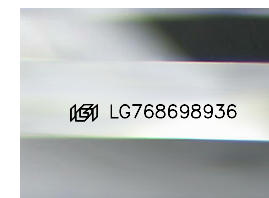
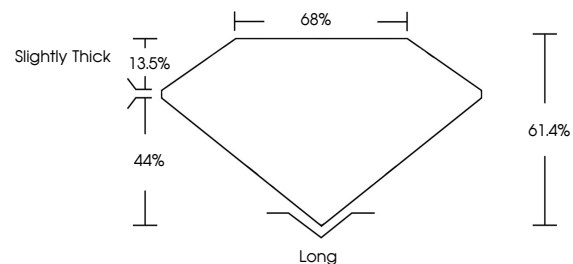
Symmetry **EXCELLENT**

Fluorescence **SLIGHT**

Inscription(s) **LG768698936**

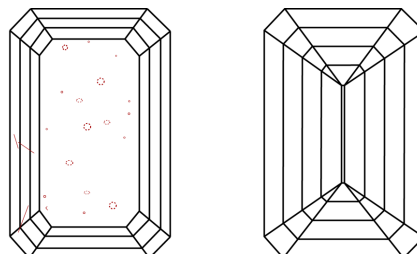
Comments: This Laboratory Grown Diamond was created by Chemical Vapor Deposition (CVD) growth process. Indications of post-growth treatment.

**PROPORTIONS**



Sample Image Used

**CLARITY CHARACTERISTICS**



**KEY TO SYMBOLS**

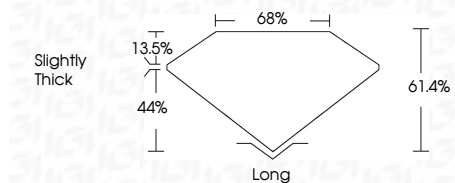
Red symbols indicate internal characteristics.  
Green symbols indicate external characteristics.

**COLOR**

D E F G H I J Faint Very Light Light

**CLARITY**

FL	IF	VS <sup>1-2</sup>	VS <sup>1-2</sup>	SI <sup>1-2</sup>	I <sup>1-3</sup>
Flawless	Internally Flawless	Very Very Slightly Included	Very Slightly Included	Slightly Included	Included



**ADDITIONAL GRADING INFORMATION**

Polish **EXCELLENT**

Symmetry **EXCELLENT**

Fluorescence **SLIGHT**

Inscription(s) **LG768698936**

Comments: This Laboratory Grown Diamond was created by Chemical Vapor Deposition (CVD) growth process. Indications of post-growth treatment.



January 29, 2026  
IGI Report No. **LG768698936**  
**EMERALD CUT**

**1.00 CARAT**  
**FANCY PINK**

SI 1  
68%  
65%

Slightly Thick

Long  
EXCELLENT  
EXCELLENT  
SLIGHT

**LG768698936**

Comments: This Laboratory Grown Diamond was created by Chemical Vapor Deposition (CVD) growth process. Indications of post-growth treatment.