



ELECTRONIC COPY

LG768698891
Report verification at igi.org



January 30, 2026

IGI Report Number **LG768698891**

Description **LABORATORY GROWN DIAMOND**

Shape and Cutting Style **PRINCESS CUT**

Measurements **6.16 X 6.15 X 4.56 MM**

GRADING RESULTS

Carat Weight **1.53 CARAT**

Color Grade **FANCY BROWN**

Clarity Grade **VS 2**

LABORATORY GROWN DIAMOND REPORT

January 30, 2026

IGI Report Number **LG768698891**

Description **LABORATORY GROWN DIAMOND**

Shape and Cutting Style **PRINCESS CUT**

Measurements **6.16 X 6.15 X 4.56 MM**

GRADING RESULTS

Carat Weight **1.53 CARAT**

Color Grade **FANCY BROWN**

Clarity Grade **VS 2**

ADDITIONAL GRADING INFORMATION

Polish **VERY GOOD**

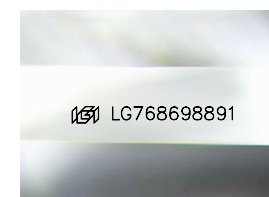
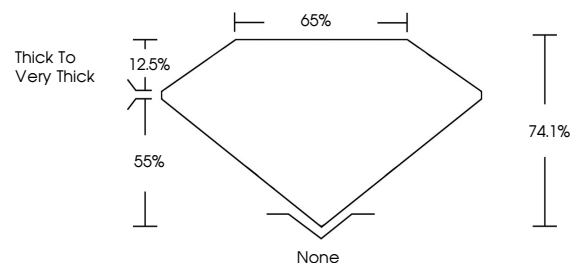
Symmetry **GOOD**

Fluorescence **SLIGHT**

Inscription(s) **LG768698891**

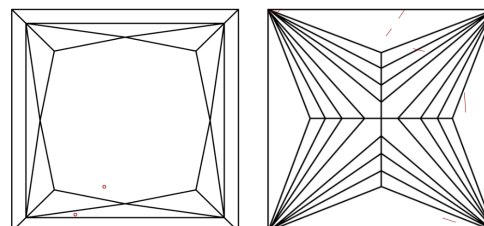
Comments: This Laboratory Grown Diamond was created by Chemical Vapor Deposition (CVD) growth process. Indications of post-growth treatment.

PROPORTIONS



Sample Image Used

CLARITY CHARACTERISTICS



KEY TO SYMBOLS

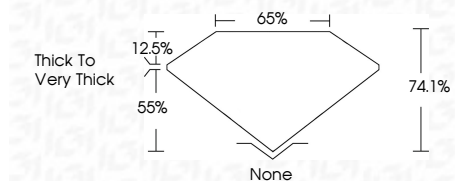
Red symbols indicate internal characteristics.
Green symbols indicate external characteristics.

COLOR

D E F G H I J Faint Very Light Light

CLARITY

FL	IF	VS ¹⁻²	VS ¹⁻²	SI ¹⁻²	I ¹⁻³
Flawless	Internally Flawless	Very Very Slightly Included	Very Slightly Included	Slightly Included	Included



ADDITIONAL GRADING INFORMATION

Polish **VERY GOOD**

Symmetry **GOOD**

Fluorescence **SLIGHT**

Inscription(s) **LG768698891**

Comments: This Laboratory Grown Diamond was created by Chemical Vapor Deposition (CVD) growth process. Indications of post-growth treatment.



January 30, 2026
IGI Report No. LG768698891
PRINCESS CUT

1.53 CARAT
FANCY BROWN
VS 2

6.16 X 6.15 X 4.56 MM
Color Grade
Clarity Grade
Table
Depth
Girdle

Thick to Very Thick
None
VERY GOOD
GOOD
SLIGHT
Inscription(s)
 LG768698891

Comments: This Laboratory Grown Diamond was created by Chemical Vapor Deposition (CVD) growth process. Indications of post-growth treatment.