



ELECTRONIC COPY

LG768698855
Report verification at igi.org



January 31, 2026
IGI Report Number **LG768698855**
Description **LABORATORY GROWN DIAMOND**
Shape and Cutting Style **RECTANGULAR CUSHION
MODIFIED BRILLIANT**
Measurements **9.03 X 7.21 X 4.95 MM**
GRADING RESULTS
Carat Weight **3.05 CARATS**
Color Grade **FANCY INTENSE BROWNISH
YELLOW**
Clarity Grade **VS 1**

LABORATORY GROWN DIAMOND REPORT

January 31, 2026
IGI Report Number **LG768698855**
Description **LABORATORY GROWN DIAMOND**
Shape and Cutting Style **RECTANGULAR CUSHION
MODIFIED BRILLIANT**
Measurements **9.03 X 7.21 X 4.95 MM**

GRADING RESULTS

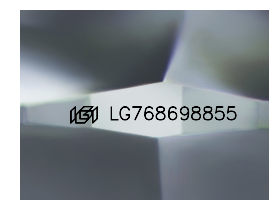
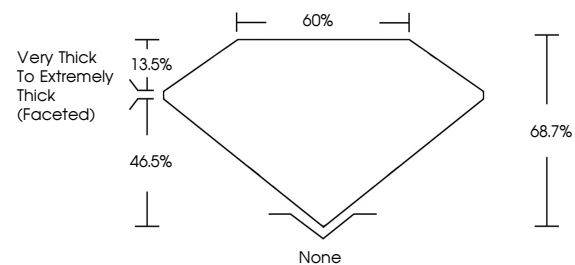
Carat Weight **3.05 CARATS**
Color Grade **FANCY INTENSE BROWNISH
YELLOW**
Clarity Grade **VS 1**

ADDITIONAL GRADING INFORMATION

Polish **EXCELLENT**
Symmetry **EXCELLENT**
Fluorescence **NONE**
Inscription(s) **IGI LG768698855**

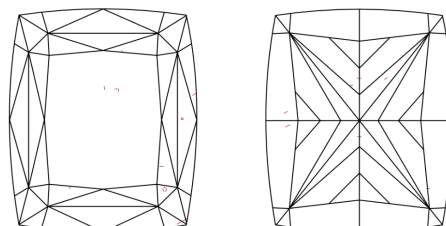
Comments: This Laboratory Grown Diamond was created by Chemical Vapor Deposition (CVD) growth process.

PROPORTIONS



Sample Image Used

CLARITY CHARACTERISTICS



KEY TO SYMBOLS

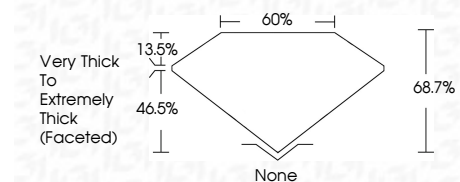
Red symbols indicate internal characteristics.
Green symbols indicate external characteristics.

COLOR

D E F G H I J Faint Very Light Light

CLARITY

FL	IF	VS ¹⁻²	VS ¹⁻²	SI ¹⁻²	I ¹⁻³
Flawless	Internally Flawless	Very Very Slightly Included	Very Slightly Included	Slightly Included	Included



ADDITIONAL GRADING INFORMATION

Polish **EXCELLENT**
Symmetry **EXCELLENT**
Fluorescence **NONE**
Inscription(s) **IGI LG768698855**
Comments: This Laboratory Grown Diamond was created by Chemical Vapor Deposition (CVD) growth process.



IGI



January 31, 2026
IGI Report No LG768698855
**RECTANGULAR CUSHION MODIFIED
BRILLIANT**
9.03 X 7.21 X 4.95 MM
Carat Weight **3.05 CARATS**
Color Grade **FANCY INTENSE
BROWNISH YELLOW**
Clarity Grade **VS 1**
Depth **68.7%**
Table **46.5%**
Girdle **Very Thick to Extremely
Thick (Faceted)**
Culet **None**
Polish **EXCELLENT**
Symmetry **EXCELLENT**
Fluorescence **NONE**
Inscription(s) **IGI LG768698855**

Comments: This Laboratory Grown Diamond was created by Chemical Vapor Deposition (CVD) growth process.