



**ELECTRONIC COPY**

LG768698796  
Report verification at igi.org



January 29, 2026

IGI Report Number **LG768698796**

Description **LABORATORY GROWN DIAMOND**

Shape and Cutting Style **ROUND BRILLIANT**

Measurements **6.47 - 6.54 X 3.85 MM**

**GRADING RESULTS**

Carat Weight **1.01 CARAT**

Color Grade **FANCY DEEP BROWN**

Clarity Grade **VS 1**

Cut Grade **IDEAL**

January 29, 2026  
IGI Report Number **LG768698796**  
Description **LABORATORY GROWN DIAMOND**  
Shape and Cutting Style **ROUND BRILLIANT**  
Measurements **6.47 - 6.54 X 3.85 MM**

**GRADING RESULTS**

Carat Weight **1.01 CARAT**

Color Grade **FANCY DEEP BROWN**

Clarity Grade **VS 1**

Cut Grade **IDEAL**

**ADDITIONAL GRADING INFORMATION**

Polish **VERY GOOD**

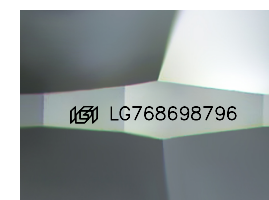
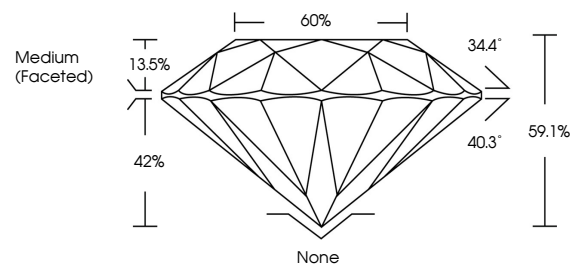
Symmetry **VERY GOOD**

Fluorescence **NONE**

Inscription(s) **IGI LG768698796**

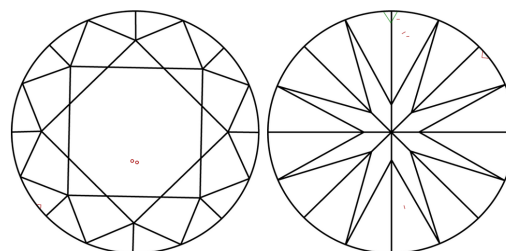
Comments: This Laboratory Grown Diamond was created by Chemical Vapor Deposition (CVD) growth process.  
Indications of post-growth treatment.

**PROPORTIONS**



Sample Image Used

**CLARITY CHARACTERISTICS**



**KEY TO SYMBOLS**

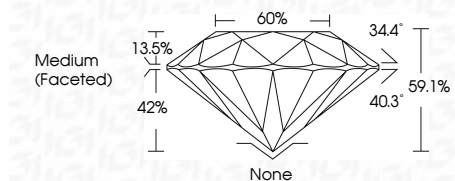
Red symbols indicate internal characteristics.  
Green symbols indicate external characteristics.

**COLOR**

D E F G H I J Faint Very Light Light

**CLARITY**

FL	IF	VS <sup>1-2</sup>	VS <sup>1-2</sup>	SI <sup>1-2</sup>	I <sup>1-3</sup>
Flawless	Internally Flawless	Very Very Slightly Included	Very Slightly Included	Slightly Included	Included



**ADDITIONAL GRADING INFORMATION**

Polish **VERY GOOD**

Symmetry **VERY GOOD**

Fluorescence **NONE**

Inscription(s) **IGI LG768698796**

Comments: This Laboratory Grown Diamond was created by Chemical Vapor Deposition (CVD) growth process.  
Indications of post-growth treatment.



January 29, 2026  
IGI Report No LG768698796  
ROUND BRILLIANT  
6.47 - 6.54 X 3.85 MM  
1.01 CARAT  
FANCY DEEP BROWN  
VS 1  
IDEAL  
59.1%  
60%  
Medium (Faceted)  
None  
VERY GOOD  
VERY GOOD  
NONE  
IGI LG768698796

Cutler  
Polish  
Symmetry  
Fluorescence  
Inscription(s)

Comments: This Laboratory Grown Diamond was created by Chemical Vapor Deposition (CVD) growth process.  
Indications of post-growth treatment.