



ELECTRONIC COPY

LG768698769
Report verification at igi.org



February 6, 2026

IGI Report Number **LG768698769**

Description **LABORATORY GROWN DIAMOND**

Shape and Cutting Style **EMERALD CUT**

Measurements **6.69 X 4.74 X 3.08 MM**

GRADING RESULTS

Carat Weight **1.01 CARAT**

Color Grade **LIGHT PINK**

Clarity Grade **SI 1**

LABORATORY GROWN DIAMOND REPORT

February 6, 2026

IGI Report Number **LG768698769**

Description **LABORATORY GROWN DIAMOND**

Shape and Cutting Style **EMERALD CUT**

Measurements **6.69 X 4.74 X 3.08 MM**

GRADING RESULTS

Carat Weight **1.01 CARAT**

Color Grade **LIGHT PINK**

Clarity Grade **SI 1**

ADDITIONAL GRADING INFORMATION

Polish **VERY GOOD**

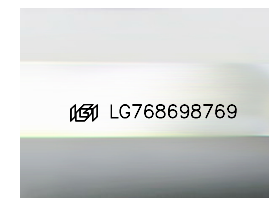
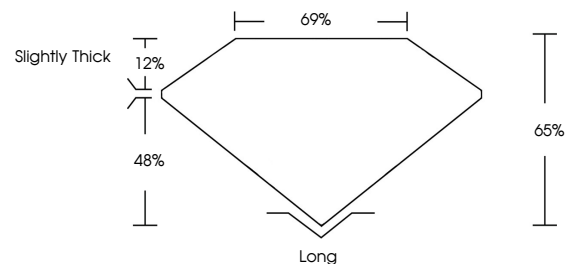
Symmetry **VERY GOOD**

Fluorescence **SLIGHT**

Inscription(s) **IGI LG768698769**

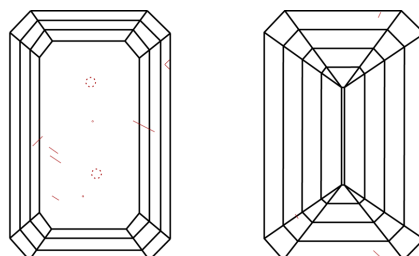
Comments: This Laboratory Grown Diamond was created by Chemical Vapor Deposition (CVD) growth process. Indications of post-growth treatment.

PROPORTIONS



Sample Image Used

CLARITY CHARACTERISTICS



KEY TO SYMBOLS

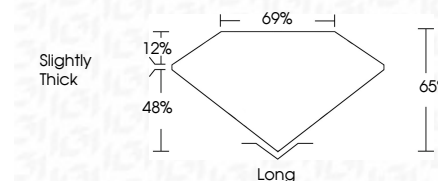
Red symbols indicate internal characteristics.
Green symbols indicate external characteristics.

COLOR

D E F G H I J Faint Very Light Light

CLARITY

FL	IF	VS ¹⁻²	VS ¹⁻²	SI ¹⁻²	I ¹⁻³
Flawless	Internally Flawless	Very Very Slightly Included	Very Slightly Included	Slightly Included	Included



ADDITIONAL GRADING INFORMATION

Polish **VERY GOOD**

Symmetry **VERY GOOD**

Fluorescence **SLIGHT**

Inscription(s) **IGI LG768698769**

Comments: This Laboratory Grown Diamond was created by Chemical Vapor Deposition (CVD) growth process. Indications of post-growth treatment.



IGI



February 6, 2026
IGI Report No. **LG768698769**
EMERALD CUT

1.01 CARAT
LIGHT PINK

Carat Weight **SI 1**
Color Grade **65%**
Depth **69%**
Table **Slightly Thick**
Girdle **Long**

Culet **VERY GOOD**
Polish **VERY GOOD**
Symmetry **SLIGHT**
Fluorescence **IGI LG768698769**
Inscription(s)

Comments: This Laboratory Grown Diamond was created by Chemical Vapor Deposition (CVD) growth process. Indications of post-growth treatment.