



ELECTRONIC COPY

LABORATORY GROWN DIAMOND REPORT

January 29, 2026
IGI Report Number **LG768698748**
Description **LABORATORY GROWN DIAMOND**
Shape and Cutting Style **PEAR BRILLIANT**
Measurements **8.82 X 5.45 X 3.47 MM**

GRADING RESULTS

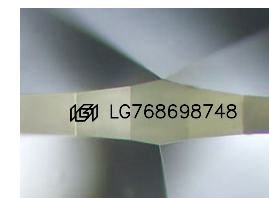
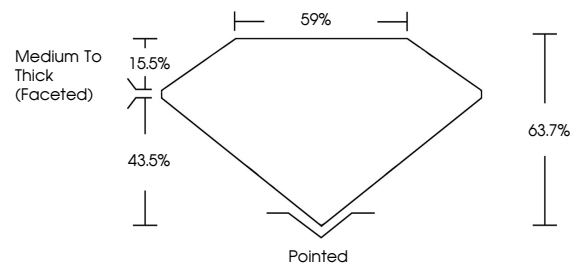
Carat Weight **1.00 CARAT**
Color Grade **FANCY INTENSE PINK**
Clarity Grade **I 1**

ADDITIONAL GRADING INFORMATION

Polish **EXCELLENT**
Symmetry **EXCELLENT**
Fluorescence **SLIGHT**
Inscription(s) **LG768698748**

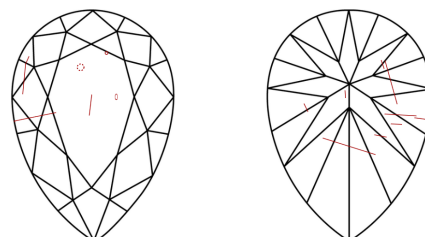
Comments: This Laboratory Grown Diamond was created by Chemical Vapor Deposition (CVD) growth process.
Indications of post-growth treatment.

PROPORTIONS



Sample Image Used

CLARITY CHARACTERISTICS



KEY TO SYMBOLS

Red symbols indicate internal characteristics.
Green symbols indicate external characteristics.

COLOR

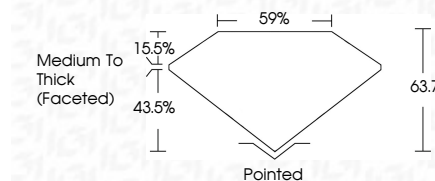
D E F G H I J Faint Very Light Light

CLARITY

FL	IF	VS ¹⁻²	VS ¹⁻²	SI ¹⁻²	I ¹⁻³
Flawless	Internally Flawless	Very Very Slightly Included	Very Slightly Included	Slightly Included	Included



January 29, 2026
IGI Report Number **LG768698748**
Description **LABORATORY GROWN DIAMOND**
Shape and Cutting Style **PEAR BRILLIANT**
Measurements **8.82 X 5.45 X 3.47 MM**
GRADING RESULTS
Carat Weight **1.00 CARAT**
Color Grade **FANCY INTENSE PINK**
Clarity Grade **I 1**



ADDITIONAL GRADING INFORMATION

Polish **EXCELLENT**
Symmetry **EXCELLENT**
Fluorescence **SLIGHT**
Inscription(s) **LG768698748**
Comments: This Laboratory Grown Diamond was created by Chemical Vapor Deposition (CVD) growth process.
Indications of post-growth treatment.



January 29, 2026
IGI Report No **LG768698748**
PEAR BRILLIANT
1.00 CARAT
Carat Weight **8.82 X 5.45 X 3.47 MM**
Color Grade **FANCY INTENSE PINK**
Clarity Grade **I 1**
Depth **63.7%**
Table **59%**
Girdle **Medium To Thick (Faceted)**
Culet **Pointed**
Polish **EXCELLENT**
Symmetry **EXCELLENT**
Fluorescence **SLIGHT**
Inscription(s) **LG768698748**
Comments: This Laboratory Grown Diamond was created by Chemical Vapor Deposition (CVD) growth process.
Indications of post-growth treatment.