



**ELECTRONIC COPY**

LG768698721  
Report verification at igi.org



January 29, 2026  
IGI Report Number **LG768698721**  
Description **LABORATORY GROWN DIAMOND**  
Shape and Cutting Style **ROUND BRILLIANT**  
Measurements **6.40 - 6.42 X 3.86 MM**  
**GRADING RESULTS**  
Carat Weight **1.00 CARAT**  
Color Grade **FANCY BROWN**  
Clarity Grade **VS 1**  
Cut Grade **VERY GOOD**

January 29, 2026  
IGI Report Number **LG768698721**  
Description **LABORATORY GROWN DIAMOND**  
Shape and Cutting Style **ROUND BRILLIANT**  
Measurements **6.40 - 6.42 X 3.86 MM**

**GRADING RESULTS**

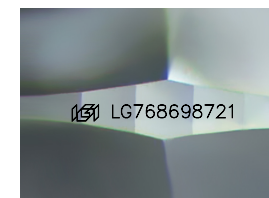
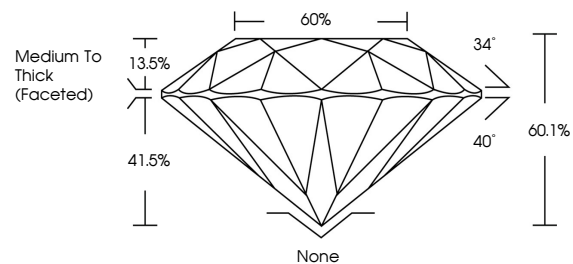
Carat Weight **1.00 CARAT**  
Color Grade **FANCY BROWN**  
Clarity Grade **VS 1**  
Cut Grade **VERY GOOD**

**ADDITIONAL GRADING INFORMATION**

Polish **VERY GOOD**  
Symmetry **VERY GOOD**  
Fluorescence **SLIGHT**  
Inscription(s) **IGI LG768698721**

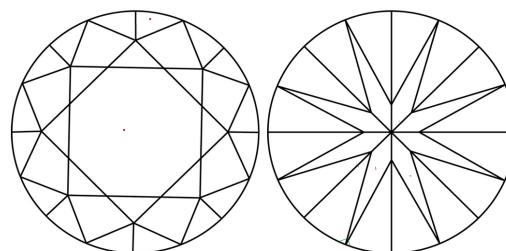
Comments: This Laboratory Grown Diamond was created by Chemical Vapor Deposition (CVD) growth process.  
Indications of post-growth treatment.

**PROPORTIONS**



Sample Image Used

**CLARITY CHARACTERISTICS**



**KEY TO SYMBOLS**

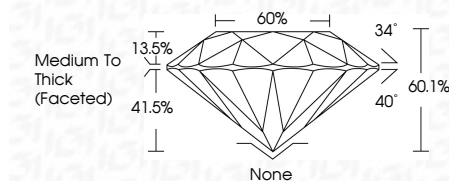
Red symbols indicate internal characteristics.  
Green symbols indicate external characteristics.

**COLOR**

D E F G H I J Faint Very Light Light

**CLARITY**

FL	IF	VS <sup>1-2</sup>	VS <sup>1-2</sup>	SI <sup>1-2</sup>	I <sup>1-3</sup>
Flawless	Internally Flawless	Very Very Slightly Included	Very Slightly Included	Slightly Included	Included



**ADDITIONAL GRADING INFORMATION**

Polish **VERY GOOD**  
Symmetry **VERY GOOD**  
Fluorescence **SLIGHT**  
Inscription(s) **IGI LG768698721**  
Comments: This Laboratory Grown Diamond was created by Chemical Vapor Deposition (CVD) growth process.  
Indications of post-growth treatment.



January 29, 2026  
IGI Report No LG768698721  
**ROUND BRILLIANT**  
6.40 - 6.42 X 3.86 MM  
1.00 CARAT  
FANCY BROWN  
VS 1  
VERY GOOD  
60.1%  
60%  
Medium To Thick (Faceted)  
None  
VERY GOOD  
VERY GOOD  
SLIGHT  
IGI LG768698721  
Comments: This Laboratory Grown Diamond was created by Chemical Vapor Deposition (CVD) growth process.  
Indications of post-growth treatment.