



ELECTRONIC COPY

LG768698716
Report verification at igi.org



January 29, 2026

IGI Report Number **LG768698716**

Description **LABORATORY GROWN DIAMOND**

Shape and Cutting Style **ROUND BRILLIANT**

Measurements **6.29 - 6.34 X 3.92 MM**

GRADING RESULTS

Carat Weight **1.00 CARAT**

Color Grade **FANCY BROWN PINK**

Clarity Grade **VVS 2**

Cut Grade **VERY GOOD**

January 29, 2026
IGI Report Number **LG768698716**
Description **LABORATORY GROWN DIAMOND**
Shape and Cutting Style **ROUND BRILLIANT**
Measurements **6.29 - 6.34 X 3.92 MM**

GRADING RESULTS

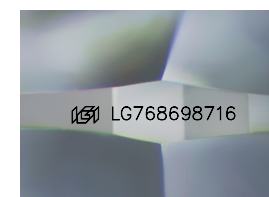
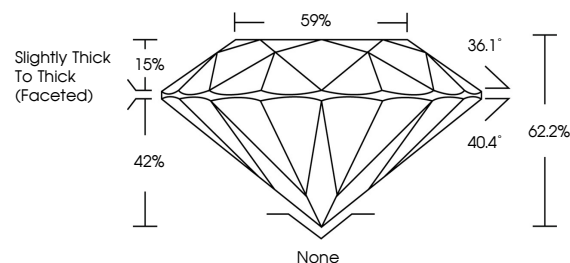
Carat Weight **1.00 CARAT**
Color Grade **FANCY BROWN PINK**
Clarity Grade **VVS 2**
Cut Grade **VERY GOOD**

ADDITIONAL GRADING INFORMATION

Polish **VERY GOOD**
Symmetry **VERY GOOD**
Fluorescence **SLIGHT**
Inscription(s) **IGI LG768698716**

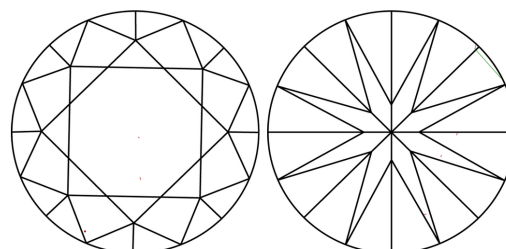
Comments: This Laboratory Grown Diamond was created by Chemical Vapor Deposition (CVD) growth process.
Indications of post-growth treatment.

PROPORTIONS



Sample Image Used

CLARITY CHARACTERISTICS



KEY TO SYMBOLS

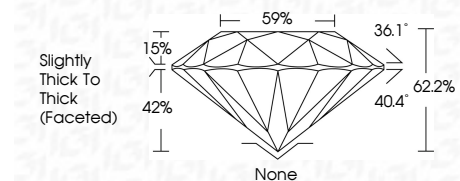
Red symbols indicate internal characteristics.
Green symbols indicate external characteristics.

COLOR

D E F G H I J Faint Very Light Light

CLARITY

FL	IF	VVS ¹⁻²	VS ¹⁻²	SI ¹⁻²	I ¹⁻³
Flawless	Internally Flawless	Very Very Slightly Included	Very Slightly Included	Slightly Included	Included



ADDITIONAL GRADING INFORMATION

Polish **VERY GOOD**
Symmetry **VERY GOOD**
Fluorescence **SLIGHT**
Inscription(s) **IGI LG768698716**
Comments: This Laboratory Grown Diamond was created by Chemical Vapor Deposition (CVD) growth process.
Indications of post-growth treatment.



January 29, 2026
IGI Report No LG768698716
ROUND BRILLIANT
6.29 - 6.34 X 3.92 MM
1.00 CARAT
FANCY BROWN PINK
VVS 2
VERY GOOD
62.2%
59%
Slightly Thick To Thick (Faceted)
None
VERY GOOD
VERY GOOD
SLIGHT
IGI LG768698716
Comments: This Laboratory Grown Diamond was created by Chemical Vapor Deposition (CVD) growth process.
Indications of post-growth treatment.