



ELECTRONIC COPY

LG768698707
Report verification at igi.org



January 29, 2026

IGI Report Number **LG768698707**

Description **LABORATORY GROWN DIAMOND**

Shape and Cutting Style **EMERALD CUT**

Measurements **6.79 X 4.64 X 3.02 MM**

GRADING RESULTS

Carat Weight **1.00 CARAT**

Color Grade **FANCY PINKISH BROWN**

Clarity Grade **SI 1**

January 29, 2026
IGI Report Number **LG768698707**
Description **LABORATORY GROWN DIAMOND**
Shape and Cutting Style **EMERALD CUT**
Measurements **6.79 X 4.64 X 3.02 MM**

GRADING RESULTS

Carat Weight **1.00 CARAT**

Color Grade **FANCY PINKISH BROWN**

Clarity Grade **SI 1**

ADDITIONAL GRADING INFORMATION

Polish **EXCELLENT**

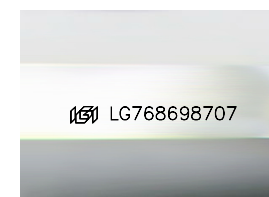
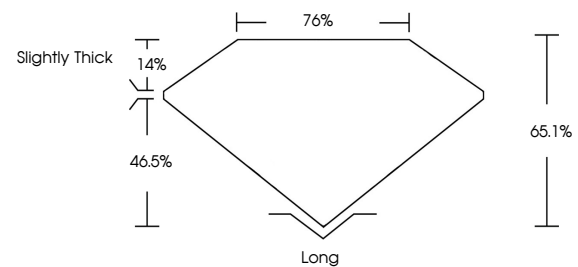
Symmetry **EXCELLENT**

Fluorescence **SLIGHT**

Inscription(s) **LG768698707**

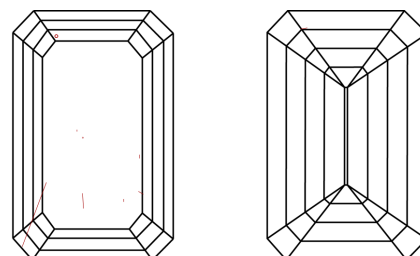
Comments: This Laboratory Grown Diamond was created by Chemical Vapor Deposition (CVD) growth process.
Indications of post-growth treatment.

PROPORTIONS



Sample Image Used

CLARITY CHARACTERISTICS



KEY TO SYMBOLS

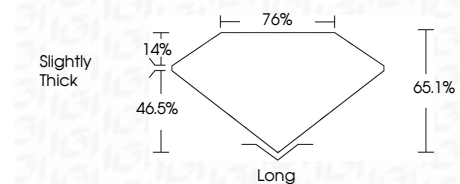
Red symbols indicate internal characteristics.
Green symbols indicate external characteristics.

COLOR

D E F G H I J Faint Very Light Light

CLARITY

FL	IF	VS ¹⁻²	VS ¹⁻²	SI ¹⁻²	I ¹⁻³
Flawless	Internally Flawless	Very Very Slightly Included	Very Slightly Included	Slightly Included	Included



ADDITIONAL GRADING INFORMATION

Polish **EXCELLENT**

Symmetry **EXCELLENT**

Fluorescence **SLIGHT**

Inscription(s) **LG768698707**

Comments: This Laboratory Grown Diamond was created by Chemical Vapor Deposition (CVD) growth process.
Indications of post-growth treatment.



IGI



January 29, 2026
IGI Report No. **LG768698707**
EMERALD CUT
Carat Weight **1.00 CARAT**
Color Grade **FANCY PINKISH BROWN**
Clarity Grade **SI 1**
Depth **65.1%**
Table **76%**
Girdle **Slightly Thick**
Culet **Long**
Polish **EXCELLENT**
Symmetry **EXCELLENT**
Fluorescence **SLIGHT**
Inscription(s) **LG768698707**
Comments: This Laboratory Grown Diamond was created by Chemical Vapor Deposition (CVD) growth process.
Indications of post-growth treatment.