



**ELECTRONIC COPY**

LG768698692  
Report verification at igi.org



January 29, 2026

IGI Report Number **LG768698692**

Description **LABORATORY GROWN DIAMOND**

Shape and Cutting Style **ROUND BRILLIANT**

Measurements **7.04 - 7.08 X 4.35 MM**

**GRADING RESULTS**

Carat Weight **1.35 CARAT**

Color Grade **LIGHT BROWN**

Clarity Grade **VS 2**

Cut Grade **IDEAL**

January 29, 2026

IGI Report Number **LG768698692**

Description **LABORATORY GROWN DIAMOND**

Shape and Cutting Style **ROUND BRILLIANT**

Measurements **7.04 - 7.08 X 4.35 MM**

**GRADING RESULTS**

Carat Weight **1.35 CARAT**

Color Grade **LIGHT BROWN**

Clarity Grade **VS 2**

Cut Grade **IDEAL**

**ADDITIONAL GRADING INFORMATION**

Polish **EXCELLENT**

Symmetry **EXCELLENT**

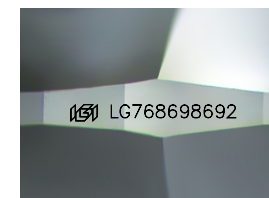
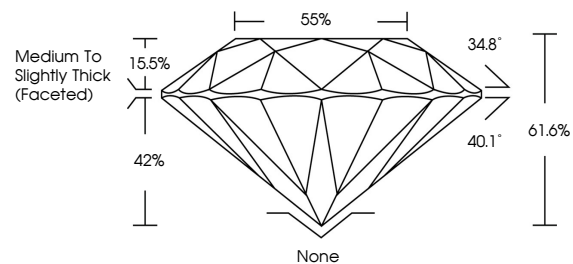
Fluorescence **NONE**

Inscription(s) **LG768698692**

Comments: This Laboratory Grown Diamond was created by Chemical Vapor Deposition (CVD) growth process.

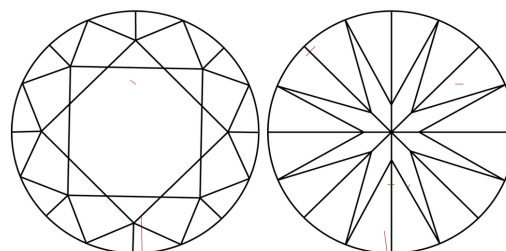
Indications of post-growth treatment.

**PROPORTIONS**



Sample Image Used

**CLARITY CHARACTERISTICS**



**KEY TO SYMBOLS**

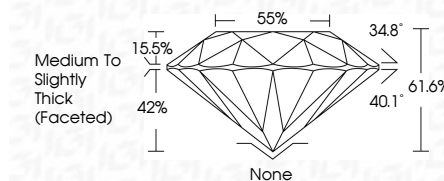
Red symbols indicate internal characteristics.  
Green symbols indicate external characteristics.

**COLOR**

D E F G H I J Faint Very Light Light

**CLARITY**

FL	IF	VS <sup>1-2</sup>	VS <sup>1-2</sup>	SI <sup>1-2</sup>	I <sup>1-3</sup>
Flawless	Internally Flawless	Very Very Slightly Included	Very Slightly Included	Slightly Included	Included



**ADDITIONAL GRADING INFORMATION**

Polish **EXCELLENT**

Symmetry **EXCELLENT**

Fluorescence **NONE**

Inscription(s) **LG768698692**

Comments: This Laboratory Grown Diamond was created by Chemical Vapor Deposition (CVD) growth process. Indications of post-growth treatment.



January 29, 2026  
IGI Report No LG768698692  
ROUND BRILLIANT

1.35 CARAT  
LIGHT BROWN

Color Grade VS 2  
Clarity Grade IDEAL  
Depth 61.6%  
Table 55%  
Girdle Medium To Slightly Thick (Faceted)

Culet None  
Polish EXCELLENT  
Symmetry EXCELLENT  
Fluorescence NONE  
Inscriptions(s) IGI LG768698692

Comments: This Laboratory Grown Diamond was created by Chemical Vapor Deposition (CVD) growth process. Indications of post-growth treatment.