



ELECTRONIC COPY

LG768698669
Report verification at igi.org



February 2, 2026
IGI Report Number **LG768698669**
Description **LABORATORY GROWN DIAMOND**
Shape and Cutting Style **BAGUETTE**
Measurements **8.35 X 4.01 X 2.65 MM**
GRADING RESULTS
Carat Weight **1.01 CARAT**
Color Grade **LIGHT PINK BROWN**
Clarity Grade **SI 2**

LABORATORY GROWN DIAMOND REPORT

February 2, 2026
IGI Report Number **LG768698669**
Description **LABORATORY GROWN DIAMOND**
Shape and Cutting Style **BAGUETTE**
Measurements **8.35 X 4.01 X 2.65 MM**

GRADING RESULTS

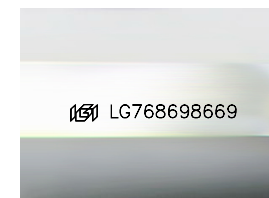
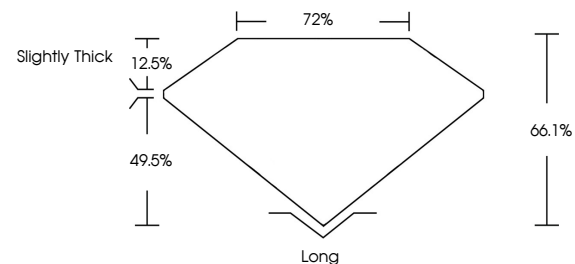
Carat Weight **1.01 CARAT**
Color Grade **LIGHT PINK BROWN**
Clarity Grade **SI 2**

ADDITIONAL GRADING INFORMATION

Polish **EXCELLENT**
Symmetry **EXCELLENT**
Fluorescence **SLIGHT**
Inscription(s) **IGI LG768698669**

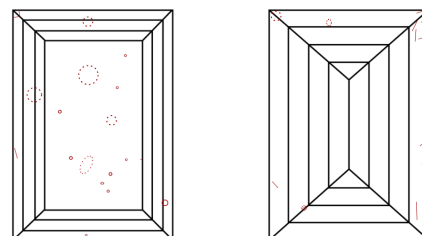
Comments: This Laboratory Grown Diamond was created by Chemical Vapor Deposition (CVD) growth process. Indications of post-growth treatment.

PROPORTIONS



Sample Image Used

CLARITY CHARACTERISTICS



KEY TO SYMBOLS

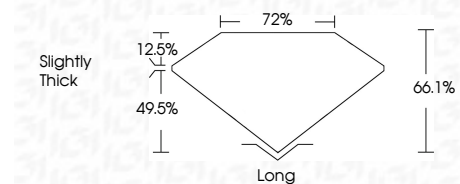
Red symbols indicate internal characteristics.
Green symbols indicate external characteristics.

COLOR

D E F G H I J Faint Very Light Light

CLARITY

FL	IF	VS ¹⁻²	VS ¹⁻²	SI ¹⁻²	I ¹⁻³
Flawless	Internally Flawless	Very Very Slightly Included	Very Slightly Included	Slightly Included	Included



ADDITIONAL GRADING INFORMATION

Polish **EXCELLENT**
Symmetry **EXCELLENT**
Fluorescence **SLIGHT**
Inscription(s) **IGI LG768698669**
Comments: This Laboratory Grown Diamond was created by Chemical Vapor Deposition (CVD) growth process. Indications of post-growth treatment.



February 2, 2026
IGI Report No. **LG768698669**
BAGUETTE
1.01 CARAT
Color Grade **LIGHT PINK BROWN**
Clarity Grade **SI 2**
Depth **66.1%**
Table **72%**
Girdle **Slightly Thick**
Culet **Long**
Polish **EXCELLENT**
Symmetry **EXCELLENT**
Fluorescence **SLIGHT**
Inscription(s) **IGI LG768698669**
Comments: This Laboratory Grown Diamond was created by Chemical Vapor Deposition (CVD) growth process. Indications of post-growth treatment.