



**ELECTRONIC COPY**

LG768698643  
Report verification at igi.org



January 31, 2026

IGI Report Number **LG768698643**

Description **LABORATORY GROWN DIAMOND**

Shape and Cutting Style **EMERALD CUT**

Measurements **6.86 X 4.75 X 3.14 MM**

**GRADING RESULTS**

Carat Weight **1.00 CARAT**

Color Grade **FANCY INTENSE PINK**

Clarity Grade **SI 1**

January 31, 2026  
IGI Report Number **LG768698643**  
Description **LABORATORY GROWN DIAMOND**  
Shape and Cutting Style **EMERALD CUT**  
Measurements **6.86 X 4.75 X 3.14 MM**

**GRADING RESULTS**

Carat Weight **1.00 CARAT**

Color Grade **FANCY INTENSE PINK**

Clarity Grade **SI 1**

**ADDITIONAL GRADING INFORMATION**

Polish **EXCELLENT**

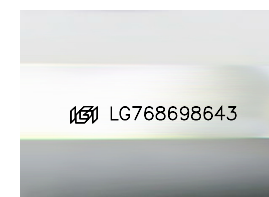
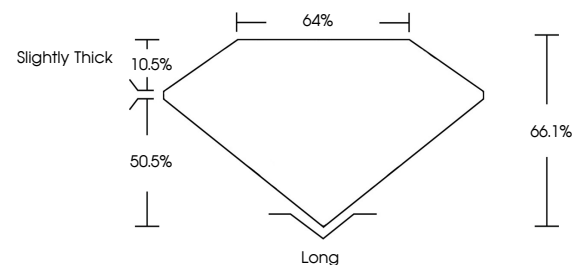
Symmetry **EXCELLENT**

Fluorescence **SLIGHT**

Inscription(s) **LG768698643**

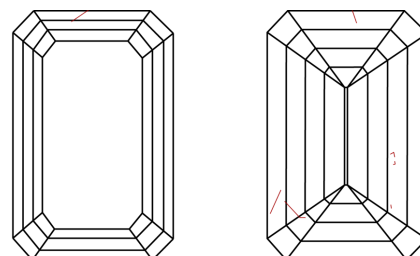
Comments: This Laboratory Grown Diamond was created by Chemical Vapor Deposition (CVD) growth process. Indications of post-growth treatment.

**PROPORTIONS**



Sample Image Used

**CLARITY CHARACTERISTICS**



**KEY TO SYMBOLS**

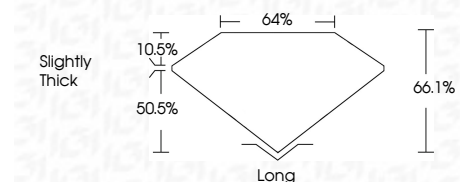
Red symbols indicate internal characteristics.  
Green symbols indicate external characteristics.

**COLOR**

D E F G H I J Faint Very Light Light

**CLARITY**

FL	IF	VS <sup>1-2</sup>	VS <sup>1-2</sup>	SI <sup>1-2</sup>	I <sup>1-3</sup>
Flawless	Internally Flawless	Very Very Slightly Included	Very Slightly Included	Slightly Included	Included



**ADDITIONAL GRADING INFORMATION**

Polish **EXCELLENT**

Symmetry **EXCELLENT**

Fluorescence **SLIGHT**

Inscription(s) **LG768698643**

Comments: This Laboratory Grown Diamond was created by Chemical Vapor Deposition (CVD) growth process. Indications of post-growth treatment.



**IGI**



January 31, 2026  
IGI Report No **LG768698643**  
**EMERALD CUT**  
**1.00 CARAT**  
Carat Weight  
Color Grade **FANCY INTENSE PINK**  
Clarity Grade **SI 1**  
Table **64%**  
Girdle **Slightly Thick**  
Culet **Long**  
Polish **EXCELLENT**  
Symmetry **EXCELLENT**  
Fluorescence **SLIGHT**  
Inscription(s) **LG768698643**  
Comments: This Laboratory Grown Diamond was created by Chemical Vapor Deposition (CVD) growth process. Indications of post-growth treatment.