



**ELECTRONIC COPY**

LG768698607  
Report verification at igi.org



January 30, 2026

IGI Report Number **LG768698607**

Description **LABORATORY GROWN DIAMOND**

Shape and Cutting Style **ROUND BRILLIANT**

Measurements **6.38 - 6.44 X 3.89 MM**

**GRADING RESULTS**

Carat Weight **1.00 CARAT**

Color Grade **FANCY DEEP BROWN**

Clarity Grade **VVS 2**

Cut Grade **VERY GOOD**

January 30, 2026  
IGI Report Number **LG768698607**  
Description **LABORATORY GROWN DIAMOND**  
Shape and Cutting Style **ROUND BRILLIANT**  
Measurements **6.38 - 6.44 X 3.89 MM**

**GRADING RESULTS**

Carat Weight **1.00 CARAT**

Color Grade **FANCY DEEP BROWN**

Clarity Grade **VVS 2**

Cut Grade **VERY GOOD**

**ADDITIONAL GRADING INFORMATION**

Polish **GOOD**

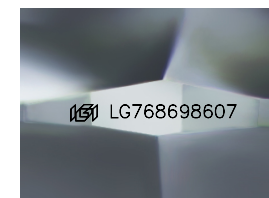
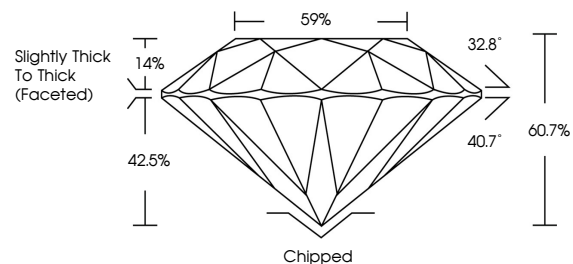
Symmetry **GOOD**

Fluorescence **NONE**

Inscription(s) **LG768698607**

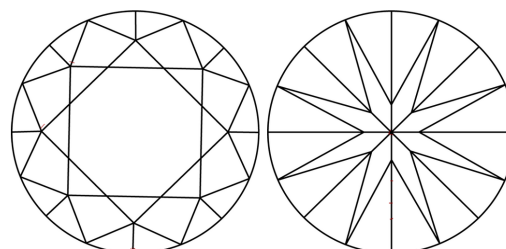
Comments: This Laboratory Grown Diamond was created by Chemical Vapor Deposition (CVD) growth process.  
Indications of post-growth treatment.

**PROPORTIONS**



Sample Image Used

**CLARITY CHARACTERISTICS**



**KEY TO SYMBOLS**

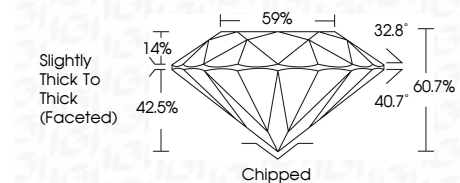
Red symbols indicate internal characteristics.  
Green symbols indicate external characteristics.

**COLOR**

D E F G H I J Faint Very Light Light

**CLARITY**

FL	IF	VVS <sup>1-2</sup>	VS <sup>1-2</sup>	SI <sup>1-2</sup>	I <sup>1-3</sup>
Flawless	Internally Flawless	Very Very Slightly Included	Very Slightly Included	Slightly Included	Included



**ADDITIONAL GRADING INFORMATION**

Polish **GOOD**

Symmetry **GOOD**

Fluorescence **NONE**

Inscription(s) **LG768698607**

Comments: This Laboratory Grown Diamond was created by Chemical Vapor Deposition (CVD) growth process.  
Indications of post-growth treatment.



January 30, 2026	1.00 CARAT	Chipped
IGI Report No LG768698607	FANCY DEEP BROWN	GOOD
ROUND BRILLIANT	VVS 2	GOOD
6.38 - 6.44 X 3.89 MM	VERY GOOD	NONE
Color Grade	60.7%	NONE
Clarity Grade	59%	IGI LG768698607
Depth	Slightly Thick To Thick (Faceted)	
Table		
Grade		
Culet		
Polish		
Symmetry		
Fluorescence		
Inscription(s)		

Comments: This Laboratory Grown Diamond was created by Chemical Vapor Deposition (CVD) growth process.  
Indications of post-growth treatment.