



LABORATORY GROWN DIAMOND REPORT

February 2, 2026
 IGI Report Number **LG768698590**
 Description **LABORATORY GROWN DIAMOND**
 Shape and Cutting Style **OVAL BRILLIANT**
 Measurements **8.63 X 5.70 X 3.31 MM**

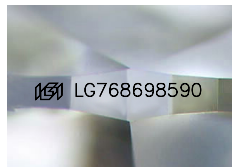
GRADING RESULTS

Carat Weight **0.99 CARAT**
 Color Grade **FANCY INTENSE BROWNISH PINK**
 Clarity Grade **VS 1**

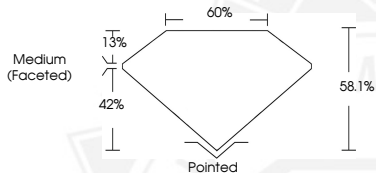
ADDITIONAL GRADING INFORMATION

Polish **VERY GOOD**
 Symmetry **VERY GOOD**
 Fluorescence **SLIGHT**
 Inscription(s) **IGI LG768698590**

Comments: This Laboratory Grown Diamond was created by Chemical Vapor Deposition (CVD) growth process. Indications of post-growth treatment.



Sample Image Used



February 2, 2026
 IGI Report Number **LG768698590**
 OVAL BRILLIANT
 LABORATORY GROWN DIAMOND
 8.63 X 5.70 X 3.31 MM
 Carat Weight **0.99 CARAT**
 Color Grade **FANCY INTENSE BROWNISH PINK**
 Clarity Grade **VS 1**
 Polish **VERY GOOD**
 Symmetry **VERY GOOD**
 Fluorescence **SLIGHT**
 Inscription(s) **IGI LG768698590**

Comments: This Laboratory Grown Diamond was created by Chemical Vapor Deposition (CVD) growth process. Indications of post-growth treatment.



February 2, 2026
 IGI Report Number **LG768698590**
 OVAL BRILLIANT
 LABORATORY GROWN DIAMOND
 8.63 X 5.70 X 3.31 MM
 Carat Weight **0.99 CARAT**
 Color Grade **FANCY INTENSE BROWNISH PINK**
 Clarity Grade **VS 1**
 Polish **VERY GOOD**
 Symmetry **VERY GOOD**
 Fluorescence **SLIGHT**
 Inscription(s) **IGI LG768698590**

Comments: This Laboratory Grown Diamond was created by Chemical Vapor Deposition (CVD) growth process. Indications of post-growth treatment.



THIS DOCUMENT WAS PRODUCED WITH THE FOLLOWING SECURITY MEASURES: SPECIAL DOCUMENT PAPER, INK SCREENS, WATERMARK, BACKGROUND DESIGNS, HOLOGRAM AND OTHER SECURITY FEATURES NOT LISTED AND DO EXCEED DOCUMENT SECURITY INDUSTRY GUIDELINES.