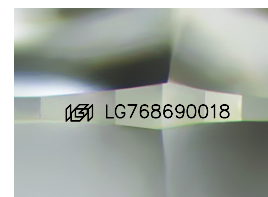
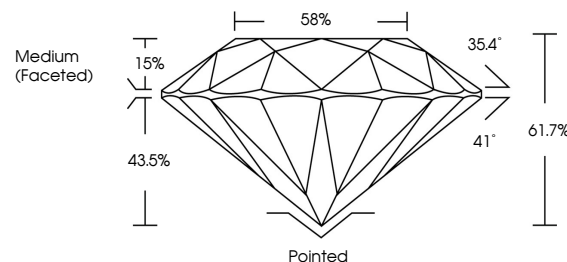


**ELECTRONIC COPY**

## LABORATORY GROWN DIAMOND REPORT

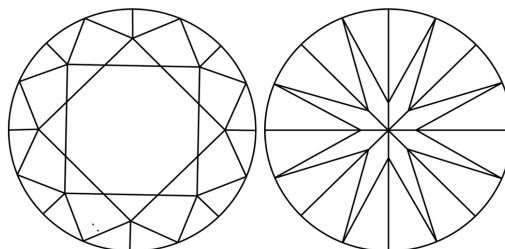
LG768690018  
Report verification at [igi.org](https://igi.org)

## PROPORTIONS



Sample Image Used

## CLARITY CHARACTERISTICS



### KEY TO SYMBOLS

Red symbols indicate internal characteristics.  
Green symbols indicate external characteristics.

## COLOR

D E F G H I J Faint Very Light Light

## CLARITY

FL	IF	VVS <sup>1-2</sup>	VS <sup>1-2</sup>	SI <sup>1-2</sup>	I <sup>1-3</sup>
Flawless	Internally Flawless	Very Very Slightly Included	Very Slightly Included	Slightly Included	Included

## LABORATORY GROWN DIAMOND REPORT



January 27, 2026

IGI Report Number **LG768690018**Description **LABORATORY GROWN DIAMOND**Shape and Cutting Style **ROUND BRILLIANT**

Measurements 6.42 - 6.47 X 3.98 MM

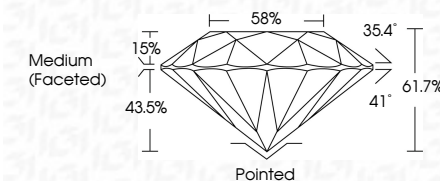
## GRADING RESULTS

Carat Weight **1.02 CARAT**

Color Grade D

Clarity Grade VVS 2

Cut Grade **IDEAL**



### ADDITIONAL GRADING INFORMATION

Polish **EXCELLENT**Symmetry **EXCELLENT**

Fluorescence NONI

Inscription(s)  LG768690018

Comments: As Grown - No indication of post-growth treatment.

This Laboratory Grown Diamond was created by High Pressure High Temperature (HPHT) growth process.  
Type II



January 27, 2026	1.02 CARAT
GL Report No. LG76690018	D
ROUND BRILLIANT	VVS 2
	IDEAL
	61.7%
	58%
	Medium Faceted
	Pointed
	EXCELLENT
	EXCELLENT
	NONE
	681 LG76690018
Carat Weight	Comments:
Color Grade	As Grown - No indication of post-growth treatment.
Clarity Grade	This Laboratory Grown Diamond was grown in a high pressure high temperature (HPHT) growth process.
Cut Grade	Type II
Depth	
Table	
Girdle	
Culet	
Polish	
Symmetry	
Fluorescence	
Inscriptions(s)	