

ELECTRONIC COPY

LABORATORY GROWN DIAMOND REPORT

January 27, 2026	
IGI Report Number	LG768688306
Description	LABORATORY GROWN DIAMOND
Shape and Cutting Style	ROUND BRILLIANT
Measurements	6.52 - 6.58 X 4.02 MM

GRADING RESULTS

Carat Weight	1.06 CARAT
Color Grade	D
Clarity Grade	VVS 2
Cut Grade	IDEAL

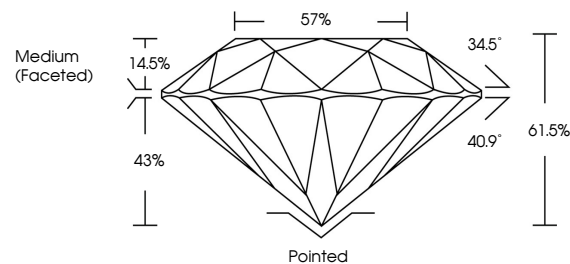
ADDITIONAL GRADING INFORMATION

Polish	EXCELLENT
Symmetry	EXCELLENT
Fluorescence	NONE
Inscription(s)	 LG768688306

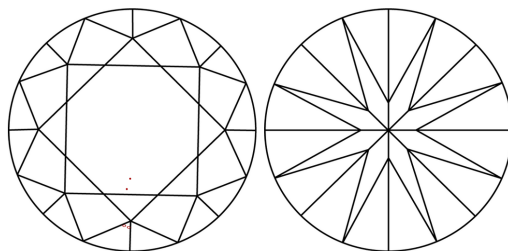
Comments: As Grown - No indication of post-growth treatment.
This Laboratory Grown Diamond was created by High Pressure High Temperature (HPHT) growth process.
Type II

LG768688306
Report verification at igi.org

PROPORTIONS

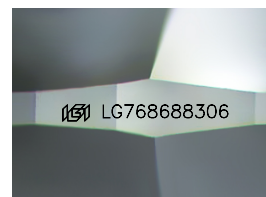


CLARITY CHARACTERISTICS



KEY TO SYMBOLS

Red symbols indicate internal characteristics.
Green symbols indicate external characteristics.



Sample Image Used

COLOR

D E F G H I J Faint Very Light Light

CLARITY

FL	IF	VVS ¹⁻²	VS ¹⁻²	SI ¹⁻²	I ¹⁻³
Flawless	Internally Flawless	Very Very Slightly Included	Very Slightly Included	Slightly Included	Included

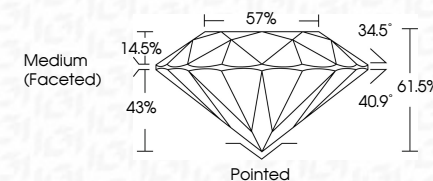
LABORATORY GROWN DIAMOND REPORT



January 27, 2026	
IGI Report Number	LG768688306
Description	LABORATORY GROWN DIAMOND
Shape and Cutting Style	ROUND BRILLIANT
Measurements	6.52 - 6.58 X 4.02 MM

GRADING RESULTS

Carat Weight	1.06 CARAT
Color Grade	D
Clarity Grade	VVS 2
Cut Grade	IDEAL



ADDITIONAL GRADING INFORMATION

Polish	EXCELLENT
Symmetry	EXCELLENT
Fluorescence	NONE
Inscription(s)	 LG768688306
Comments: As Grown - No indication of post-growth treatment.	
This Laboratory Grown Diamond was created by High Pressure High Temperature (HPHT) growth process.	
Type II	



© IGI 2020, International Gemological Institute

FD - 10 20

January 27, 2026	1.06 CARAT
GL Report No. LG766688306	D
ROUND BRILLIANT	VVS 2
	IDEAL
	61.5%
	57%
	Medium (Fossilco)
	Polished
	EXCELLENT
	EXCELLENT
	NONE
	#69 LG766688306

Comments:

AS - Growth - No indication of post-growth
 L - The Laboratory Grown Diamond was
 created by High Pressure High
 Temperature (HPHT) growth process.
 Type I