



LABORATORY GROWN DIAMOND REPORT

January 31, 2026
 IGI Report Number **LG768683368**
 Description **LABORATORY GROWN DIAMOND**
 Shape and Cutting Style **HEART MODIFIED BRILLIANT**
 Measurements **5.33 X 6.07 X 3.25 MM**

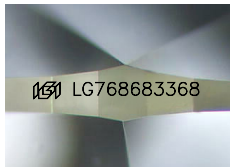
GRADING RESULTS

Carat Weight **0.77 CARAT**
 Color Grade **FANCY YELLOW**
 Clarity Grade **VVS 2**

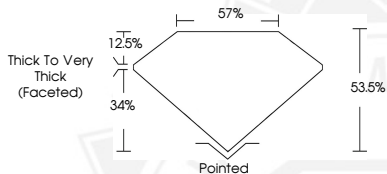
ADDITIONAL GRADING INFORMATION

Polish **VERY GOOD**
 Symmetry **VERY GOOD**
 Fluorescence **NONE**
 Inscription(s) **IGI LG768683368**

Comments: This Laboratory Grown Diamond was created by
 Chemical Vapor Deposition (CVD) growth process.



Sample Image Used



January 31, 2026
 IGI Report Number **LG768683368**
HEART MODIFIED BRILLIANT
LABORATORY GROWN DIAMOND
5.33 X 6.07 X 3.25 MM
 Carat Weight **0.77 CARAT**
 Color Grade **FANCY YELLOW**
 Clarity Grade **VVS 2**
 Polish **VERY GOOD**
 Symmetry **VERY GOOD**
 Fluorescence **NONE**
 Inscription(s) **IGI LG768683368**

Comments: This Laboratory Grown
 Diamond was created by
 Chemical Vapor Deposition (CVD)
 growth process.



January 31, 2026
 IGI Report Number **LG768683368**
HEART MODIFIED BRILLIANT
LABORATORY GROWN DIAMOND
5.33 X 6.07 X 3.25 MM
 Carat Weight **0.77 CARAT**
 Color Grade **FANCY YELLOW**
 Clarity Grade **VVS 2**
 Polish **VERY GOOD**
 Symmetry **VERY GOOD**
 Fluorescence **NONE**
 Inscription(s) **IGI LG768683368**

Comments: This Laboratory Grown
 Diamond was created by
 Chemical Vapor Deposition (CVD)
 growth process.



THIS DOCUMENT WAS PRODUCED WITH THE FOLLOWING SECURITY MEASURES: SPECIAL DOCUMENT PAPER, INK SCREENS, WATERMARK, BACKGROUND DESIGNS, HOLOGRAM AND OTHER SECURITY FEATURES NOT LISTED AND DO EXCEED DOCUMENT SECURITY INDUSTRY GUIDELINES.