



ELECTRONIC COPY

LABORATORY GROWN DIAMOND REPORT

LG768683009
Report verification at igi.org

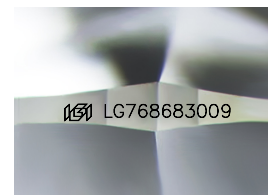
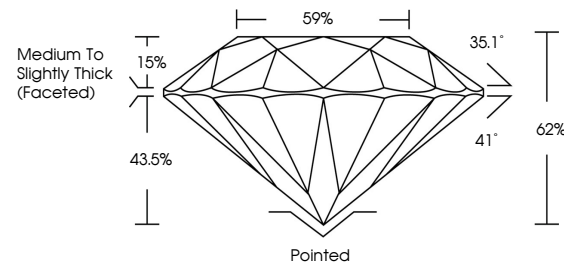
January 25, 2026	
IGI Report Number	LG768683009
Description	LABORATORY GROWN DIAMOND
Shape and Cutting Style	ROUND BRILLIANT
Measurements	9.26 - 9.32 X 5.75 MM
GRADING RESULTS	
Carat Weight	3.08 CARATS
Color Grade	D
Clarity Grade	VS 1
Cut Grade	IDEAL

ADDITIONAL GRADING INFORMATION

Polish	EXCELLENT
Symmetry	EXCELLENT
Fluorescence	NONE
Inscription(s)	 LG768683009

Comments: This Laboratory Grown Diamond was created by Chemical Vapor Deposition (CVD) growth process.
Type IIa

PROPORTIONS



Sample Image Used

COLOR

D E F G H I J Faint Very Light Light

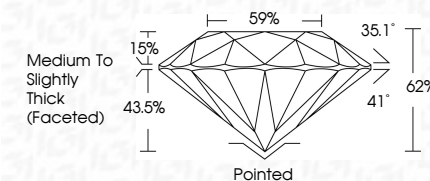
CLARITY

FL	IF	VVS ¹⁻²	VS ¹⁻²	SI ¹⁻²	I ¹⁻³
Flawless	Internally Flawless	Very Very Slightly Included	Very Slightly Included	Slightly Included	Included

LABORATORY GROWN DIAMOND REPORT



January 25, 2026	
IGI Report Number	LG768683009
Description	LABORATORY GROWN DIAMOND
Shape and Cutting Style	ROUND BRILLIANT
Measurements	9.26 - 9.32 X 5.75 MM
GRADING RESULTS	
Carat Weight	3.08 CARATS
Color Grade	D
Clarity Grade	VS 1
Cut Grade	IDEAL



ADDITIONAL GRADING INFORMATION

Polish	EXCELLENT
Symmetry	EXCELLENT
Fluorescence	NONE
Inscription(s)	 LG768683009
Comments: This Laboratory Grown Diamond was created by Chemical Vapor Deposition (CVD) growth process.	
Type IIa	



© IGI 2020, International Gemological Institute

FD - 10 20



THIS DOCUMENT WAS PRODUCED WITH THE FOLLOWING SECURITY MEASURES: SPECIAL DOCUMENT PAPER, INK SCREENS, WATERMARK, BACKGROUND DESIGNS, HOLOGRAM, AND OTHER SECURITY FEATURES NOT LISTED AND DO EXCEED DOCUMENT SECURITY INDUSTRY GUIDELINES.

www.igi.org

January 25, 2026
GI Report No LG768683009
ROUND BRILLIANT

2.26 - 9.32 X 5.75 MM		3.08 CARATS	
Carat Weight			
Color Grade			
Clarity Grade		VS 1	
Cut Grade		IDEAL	
Depth		62%	
Table		59%	
Girdle		Medium To Slightly Thick (Faceted)	
Culet		Pointed	
Polish		EXCELLENT	
Symmetry		EXCELLENT	
Fluorescence		NONE	
Identification		gem 1274589094	

Comments:
This Laboratory Grown Diamond was created by Chemical Vapor Deposition (CVD) growth process.