



ELECTRONIC COPY

LABORATORY GROWN DIAMOND REPORT

February 9, 2026
IGI Report Number **LG768679859**
Description **LABORATORY GROWN DIAMOND**
Shape and Cutting Style **CUT CORNERED RECTANGULAR MIXED CUT**
Measurements **9.37 X 6.76 X 4.36 MM**

GRADING RESULTS

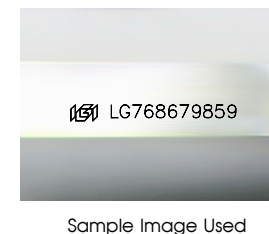
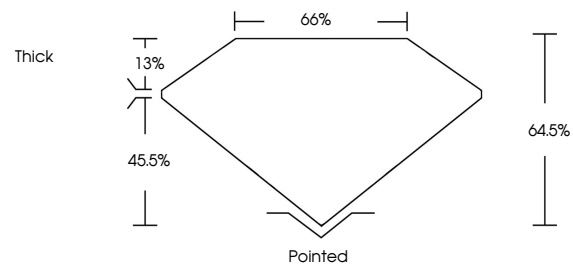
Carat Weight **2.56 CARATS**
Color Grade **FANCY YELLOW**
Clarity Grade **VVS 2**

ADDITIONAL GRADING INFORMATION

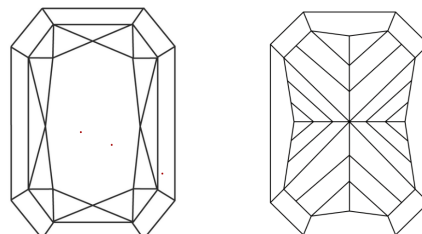
Polish **EXCELLENT**
Symmetry **EXCELLENT**
Fluorescence **NONE**
Inscription(s) **IGI LG768679859**

Comments: This Laboratory Grown Diamond was created by Chemical Vapor Deposition (CVD) growth process.

PROPORTIONS



CLARITY CHARACTERISTICS



KEY TO SYMBOLS

Red symbols indicate internal characteristics.
Green symbols indicate external characteristics.

COLOR

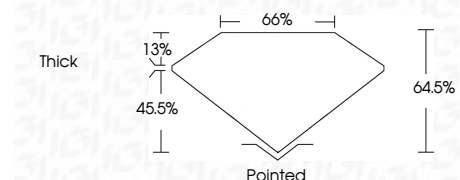
D E F G H I J Faint Very Light Light

CLARITY

| FL | IF | VVS ¹⁻² | VS ¹⁻² | SI ¹⁻² | I ¹⁻³ |
|----------|---------------------|-----------------------------|------------------------|-------------------|------------------|
| Flawless | Internally Flawless | Very Very Slightly Included | Very Slightly Included | Slightly Included | Included |



February 9, 2026
IGI Report Number **LG768679859**
Description **LABORATORY GROWN DIAMOND**
Shape and Cutting Style **CUT CORNERED RECTANGULAR MIXED CUT**
Measurements **9.37 X 6.76 X 4.36 MM**
GRADING RESULTS
Carat Weight **2.56 CARATS**
Color Grade **FANCY YELLOW**
Clarity Grade **VVS 2**



ADDITIONAL GRADING INFORMATION

Polish **EXCELLENT**
Symmetry **EXCELLENT**
Fluorescence **NONE**
Inscription(s) **IGI LG768679859**
Comments: This Laboratory Grown Diamond was created by Chemical Vapor Deposition (CVD) growth process.



February 9, 2026
IGI Report No **LG768679859**
CUT CORNERED RECT. MIXED CUT
2.56 CARATS
FANCY YELLOW
Carat Weight
Color Grade
Clarity Grade
Depth
Table
Girdle
Thick
Pointed
Polish
Symmetry
Fluorescence
Inscription(s)
EXCELLENT
EXCELLENT
NONE
IGI LG768679859
Comments: This Laboratory Grown Diamond was created by Chemical Vapor Deposition (CVD) growth process.