



**ELECTRONIC COPY**

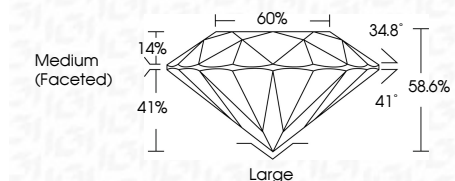
LG768679317  
Report verification at igi.org



January 31, 2026  
IGI Report Number **LG768679317**  
Description **LABORATORY GROWN DIAMOND**  
Shape and Cutting Style **OLD EUROPEAN CUT**  
Measurements **6.54 - 6.55 X 3.83 MM**

**GRADING RESULTS**

Carat Weight **1.06 CARAT**  
Color Grade **I**  
Clarity Grade **VS 1**

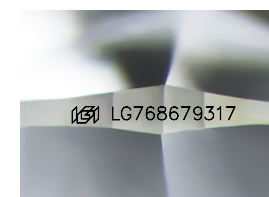


**ADDITIONAL GRADING INFORMATION**

Polish **EXCELLENT**  
Symmetry **EXCELLENT**  
Fluorescence **NONE**  
Inscription(s) **IGI LG768679317**  
Comments: This Laboratory Grown Diamond was created by Chemical Vapor Deposition (CVD) growth process. Type IIa

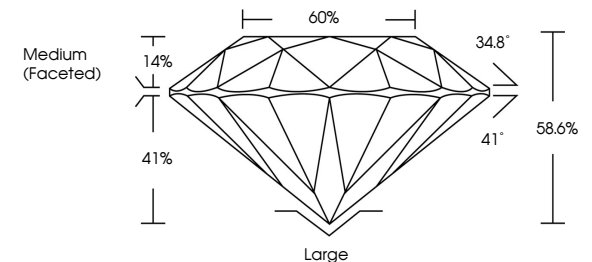


January 31, 2026  
IGI Report No **LG768679317**  
**OLD EUROPEAN CUT**  
**6.54 - 6.55 X 3.83 MM**  
Carat Weight **1.06 CARAT**  
Color Grade **I**  
Clarity Grade **VS 1**  
Depth **58.6%**  
Table **60%**  
Girdle **Medium (Faceted)**  
Culet **Large**  
Polish **EXCELLENT**  
Symmetry **EXCELLENT**  
Fluorescence **NONE**  
Inscription(s) **IGI LG768679317**  
Comments: This Laboratory Grown Diamond was created by Chemical Vapor Deposition (CVD) growth process. Type IIa

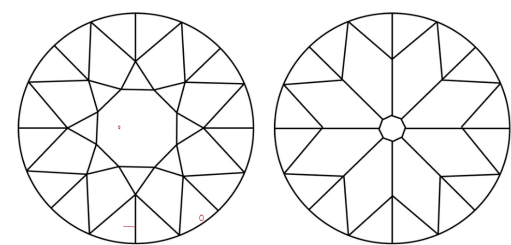


Sample Image Used

**PROPORTIONS**



**CLARITY CHARACTERISTICS**



**KEY TO SYMBOLS**

Red symbols indicate internal characteristics.  
Green symbols indicate external characteristics.

**COLOR**

D	E	F	G	H	I	J	Faint	Very Light	Light
---	---	---	---	---	---	---	-------	------------	-------

**CLARITY**

FL	IF	VS <sup>1-2</sup>	VS <sup>1-2</sup>	SI <sup>1-2</sup>	I <sup>1-3</sup>
Flawless	Internally Flawless	Very Very Slightly Included	Very Slightly Included	Slightly Included	Included

