



**ELECTRONIC COPY**

LG768677294  
Report verification at igi.org



February 17, 2026

IGI Report Number **LG768677294**

Description **LABORATORY GROWN DIAMOND**

Shape and Cutting Style **CUT CORNERED  
RECTANGULAR MODIFIED  
BRILLIANT**

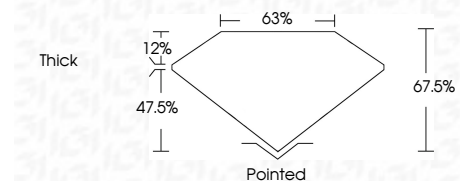
Measurements **11.54 X 8.28 X 5.59 MM**

**GRADING RESULTS**

Carat Weight **5.09 CARATS**

Color Grade **FANCY INTENSE YELLOW**

Clarity Grade **VVS 2**



**ADDITIONAL GRADING INFORMATION**

Polish **EXCELLENT**

Symmetry **EXCELLENT**

Fluorescence **NONE**

Inscription(s) **IGI LG768677294**

Comments: This Laboratory Grown Diamond was created by Chemical Vapor Deposition (CVD) growth process.



February 17, 2026	IGI Report No LG768677294	CUT CORNERED RECT. MODIFIED BRILLIANT
11.54 X 8.28 X 5.59 MM	5.09 CARATS	FANCY INTENSE YELLOW
VVS 2	67.5%	Thick
EXCELLENT	EXCELLENT	NONE
IGI LG768677294		

Comments: This Laboratory Grown Diamond was created by Chemical Vapor Deposition (CVD) growth process.

**LABORATORY GROWN DIAMOND REPORT**

February 17, 2026

IGI Report Number **LG768677294**

Description **LABORATORY GROWN DIAMOND**

Shape and Cutting Style **CUT CORNERED RECTANGULAR  
MODIFIED BRILLIANT**

Measurements **11.54 X 8.28 X 5.59 MM**

**GRADING RESULTS**

Carat Weight **5.09 CARATS**

Color Grade **FANCY INTENSE YELLOW**

Clarity Grade **VVS 2**

**ADDITIONAL GRADING INFORMATION**

Polish **EXCELLENT**

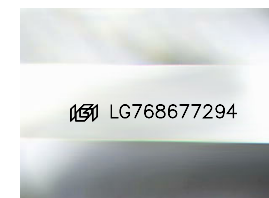
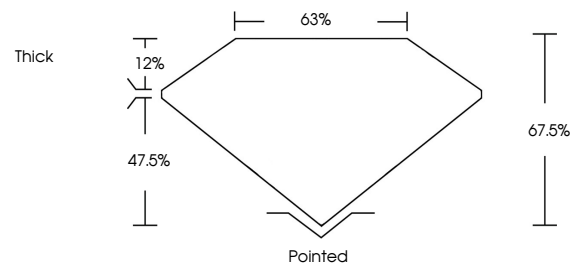
Symmetry **EXCELLENT**

Fluorescence **NONE**

Inscription(s) **IGI LG768677294**

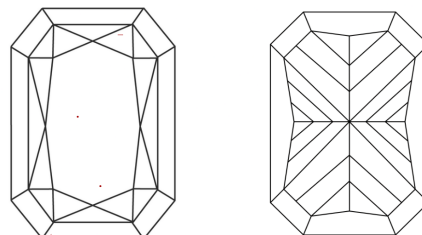
Comments: This Laboratory Grown Diamond was created by Chemical Vapor Deposition (CVD) growth process.

**PROPORTIONS**



Sample Image Used

**CLARITY CHARACTERISTICS**



**KEY TO SYMBOLS**

Red symbols indicate internal characteristics.  
Green symbols indicate external characteristics.

**COLOR**

D E F G H I J Faint Very Light Light

**CLARITY**

FL	IF	VVS <sup>1-2</sup>	VS <sup>1-2</sup>	SI <sup>1-2</sup>	I <sup>1-3</sup>
Flawless	Internally Flawless	Very Very Slightly Included	Very Slightly Included	Slightly Included	Included

