



**ELECTRONIC COPY**

LG768676314  
Report verification at igi.org



February 5, 2026

IGI Report Number **LG768676314**

Description **LABORATORY GROWN DIAMOND**

Shape and Cutting Style **OVAL BRILLIANT**

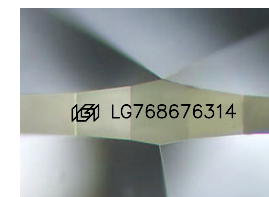
Measurements **11.93 X 7.44 X 4.41 MM**

**GRADING RESULTS**

Carat Weight **2.51 CARATS**

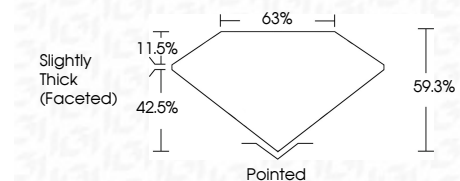
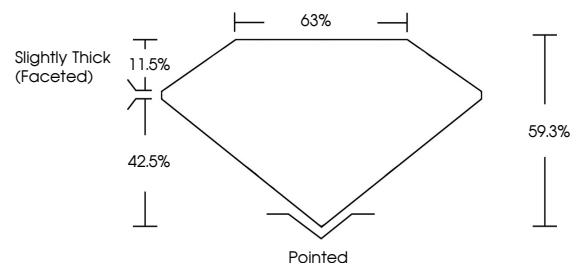
Color Grade **D**

Clarity Grade **VVS 1**

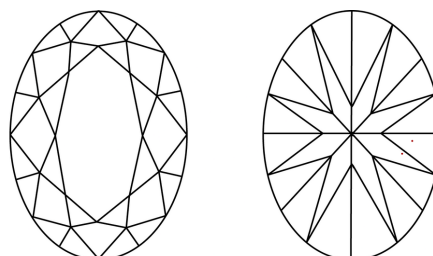


Sample Image Used

**PROPORTIONS**



**CLARITY CHARACTERISTICS**



**KEY TO SYMBOLS**

Red symbols indicate internal characteristics.  
Green symbols indicate external characteristics.

**COLOR**

D E F G H I J Faint Very Light Light

**CLARITY**

FL	IF	VS <sup>1-2</sup>	VS <sup>1-2</sup>	SI <sup>1-2</sup>	I <sup>1-3</sup>
Flawless	Internally Flawless	Very Very Slightly Included	Very Slightly Included	Slightly Included	Included

**ADDITIONAL GRADING INFORMATION**

Polish **EXCELLENT**

Symmetry **EXCELLENT**

Fluorescence **NONE**

Inscription(s) **IGI LG768676314**

Comments: This Laboratory Grown Diamond was created by Chemical Vapor Deposition (CVD) growth process. Type IIa



**IGI**

February 5, 2026	IGI Report No LG768676314	<b>OVAL BRILLIANT</b>	<b>2.51 CARATS</b>	<b>D</b>	<b>VVS 1</b>	<b>59.3%</b>	<b>42.5%</b>	<b>Slightly Thick (Faceted)</b>	<b>Pointed</b>	<b>EXCELLENT</b>	<b>EXCELLENT</b>	<b>NONE</b>	<b>IGI LG768676314</b>
IGI Report No LG768676314	11.93 X 7.44 X 4.41 MM	Carat Weight	2.51 CARATS	Color Grade	D	Clarity Grade	VVS 1	Depth	59.3%	Table	42.5%	Grades	Slightly Thick (Faceted)
Culet	Polish	Symmetry	Fluorescence	Inscription(s)	IGI LG768676314	Comments: This Laboratory Grown Diamond was created by Chemical Vapor Deposition (CVD) growth process. Type IIa							