



**ELECTRONIC COPY**

LG768673744  
Report verification at igi.org



February 26, 2026

IGI Report Number **LG768673744**

Description **LABORATORY GROWN DIAMOND**

Shape and Cutting Style **ROUND BRILLIANT**

Measurements **10.25 - 10.28 X 6.27 MM**

**GRADING RESULTS**

Carat Weight **4.06 CARATS**

Color Grade **F**

Clarity Grade **VVS 2**

Cut Grade **IDEAL**

February 26, 2026

IGI Report Number **LG768673744**

Description **LABORATORY GROWN DIAMOND**

Shape and Cutting Style **ROUND BRILLIANT**

Measurements **10.25 - 10.28 X 6.27 MM**

**GRADING RESULTS**

Carat Weight **4.06 CARATS**

Color Grade **F**

Clarity Grade **VVS 2**

Cut Grade **IDEAL**

**ADDITIONAL GRADING INFORMATION**

Polish **EXCELLENT**

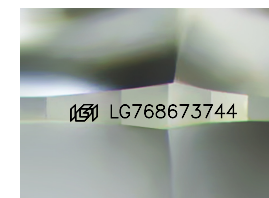
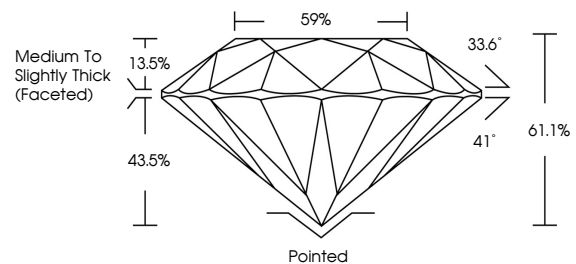
Symmetry **EXCELLENT**

Fluorescence **NONE**

Inscription(s) **LG768673744**

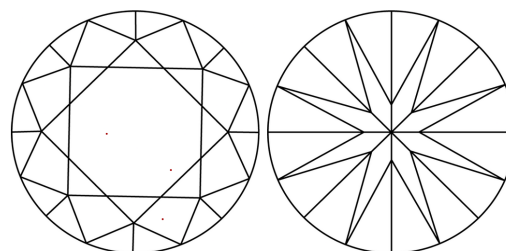
Comments: This Laboratory Grown Diamond was created by Chemical Vapor Deposition (CVD) growth process. Type IIa

**PROPORTIONS**



Sample Image Used

**CLARITY CHARACTERISTICS**



**KEY TO SYMBOLS**

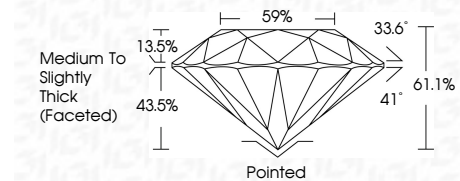
Red symbols indicate internal characteristics.  
Green symbols indicate external characteristics.

**COLOR**

D E F G H I J Faint Very Light Light

**CLARITY**

| FL       | IF                  | VVS <sup>1-2</sup>          | VS <sup>1-2</sup>      | SI <sup>1-2</sup> | I <sup>1-3</sup> |
|----------|---------------------|-----------------------------|------------------------|-------------------|------------------|
| Flawless | Internally Flawless | Very Very Slightly Included | Very Slightly Included | Slightly Included | Included         |



**ADDITIONAL GRADING INFORMATION**

Polish **EXCELLENT**

Symmetry **EXCELLENT**

Fluorescence **NONE**

Inscription(s) **LG768673744**

Comments: This Laboratory Grown Diamond was created by Chemical Vapor Deposition (CVD) growth process. Type IIa



**IGI**



|                                  |                                  |                                |                    |              |              |              |            |   |                |                  |                  |             |                    |
|----------------------------------|----------------------------------|--------------------------------|--------------------|--------------|--------------|--------------|------------|---|----------------|------------------|------------------|-------------|--------------------|
| February 26, 2026                | IGI Report No <b>LG768673744</b> | <b>4.06 CARATS</b>             | <b>F</b>           | <b>VVS 2</b> | <b>IDEAL</b> | <b>61.1%</b> | <b>59%</b> | <b>Medium To Slightly Thick (Faceted)</b> | <b>Pointed</b> | <b>EXCELLENT</b> | <b>EXCELLENT</b> | <b>NONE</b> | <b>LG768673744</b> |
| IGI Report No <b>LG768673744</b> | <b>ROUND BRILLIANT</b>           | <b>10.25 - 10.28 X 6.27 MM</b> | <b>4.06 CARATS</b> | <b>VVS 2</b> | <b>IDEAL</b> | <b>61.1%</b> | <b>59%</b> | <b>Medium To Slightly Thick (Faceted)</b> | <b>Pointed</b> | <b>EXCELLENT</b> | <b>EXCELLENT</b> | <b>NONE</b> | <b>LG768673744</b> |
| IGI Report No <b>LG768673744</b> | <b>ROUND BRILLIANT</b>           | <b>10.25 - 10.28 X 6.27 MM</b> | <b>4.06 CARATS</b> | <b>VVS 2</b> | <b>IDEAL</b> | <b>61.1%</b> | <b>59%</b> | <b>Medium To Slightly Thick (Faceted)</b> | <b>Pointed</b> | <b>EXCELLENT</b> | <b>EXCELLENT</b> | <b>NONE</b> | <b>LG768673744</b> |

Comments: This Laboratory Grown Diamond was created by Chemical Vapor Deposition (CVD) growth process. Type IIa