



ELECTRONIC COPY

LABORATORY GROWN DIAMOND REPORT

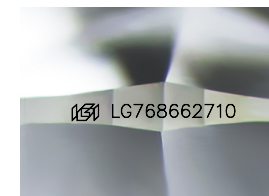
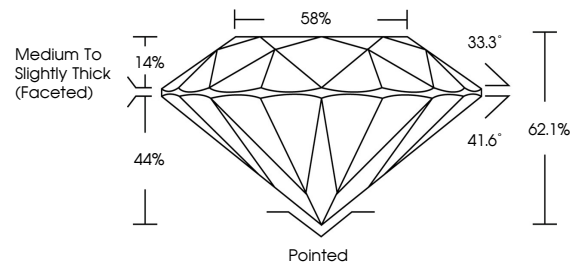
January 31, 2026
 IGI Report Number **LG768662710**
 Description **LABORATORY GROWN DIAMOND**
 Shape and Cutting Style **ROUND BRILLIANT**
 Measurements **9.31 - 9.35 X 5.80 MM**
GRADING RESULTS
 Carat Weight **3.09 CARATS**
 Color Grade **FANCY PINK**
 Clarity Grade **VVS 2**
 Cut Grade **IDEAL**

ADDITIONAL GRADING INFORMATION

Polish **EXCELLENT**
 Symmetry **EXCELLENT**
 Fluorescence **SLIGHT**
 Inscription(s) **LG768662710**

Comments: This Laboratory Grown Diamond was created by Chemical Vapor Deposition (CVD) growth process.
 Indications of post-growth treatment.

PROPORTIONS



Sample Image Used

COLOR

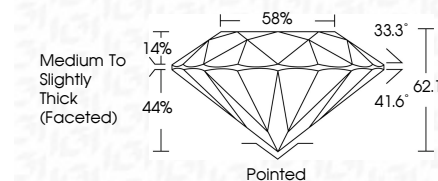
D E F G H I J Faint Very Light Light

CLARITY

FL	IF	VS ¹⁻²	VS ¹⁻²	SI ¹⁻²	I ¹⁻³
Flawless	Internally Flawless	Very Very Slightly Included	Very Slightly Included	Slightly Included	Included



January 31, 2026
 IGI Report Number **LG768662710**
 Description **LABORATORY GROWN DIAMOND**
 Shape and Cutting Style **ROUND BRILLIANT**
 Measurements **9.31 - 9.35 X 5.80 MM**
GRADING RESULTS
 Carat Weight **3.09 CARATS**
 Color Grade **FANCY PINK**
 Clarity Grade **VVS 2**
 Cut Grade **IDEAL**



ADDITIONAL GRADING INFORMATION

Polish **EXCELLENT**
 Symmetry **EXCELLENT**
 Fluorescence **SLIGHT**
 Inscription(s) **LG768662710**
 Comments: This Laboratory Grown Diamond was created by Chemical Vapor Deposition (CVD) growth process.
 Indications of post-growth treatment.



January 31, 2026
 IGI Report No LG768662710
ROUND BRILLIANT
 3.09 CARATS
 Carat Weight
 Color Grade **FANCY PINK**
 Clarity Grade **VVS 2**
 Depth **IDEAL**
 Table **62.1%**
 Pavilion Angle **41.6°**
 Crown Angle **33.3°**
 Total Depth **62.1%**
 Width **58%**
 Thickness **Medium To Slightly Thick (Faceted)**
 Cut **Pointed**
 Polish **EXCELLENT**
 Symmetry **EXCELLENT**
 Fluorescence **SLIGHT**
 Inscription(s) **LG768662710**
 Comments: This Laboratory Grown Diamond was created by Chemical Vapor Deposition (CVD) growth process.
 Indications of post-growth treatment.