



**ELECTRONIC COPY**

LG768662201  
Report verification at igi.org



January 25, 2026

IGI Report Number **LG768662201**

Description **LABORATORY GROWN DIAMOND**

Shape and Cutting Style **ROUND BRILLIANT**

Measurements **7.42 - 7.44 X 4.54 MM**

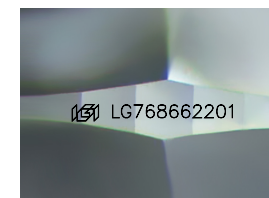
**GRADING RESULTS**

Carat Weight **1.58 CARAT**

Color Grade **D**

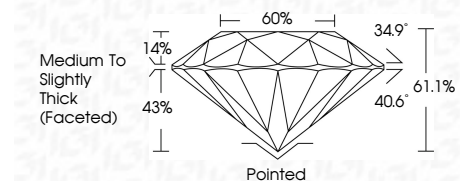
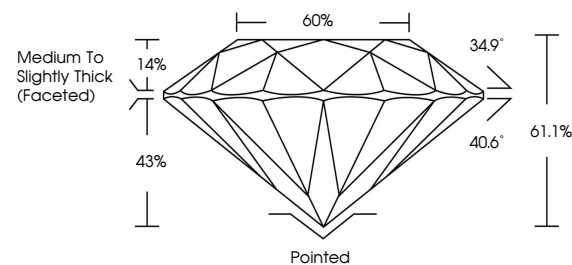
Clarity Grade **VS 1**

Cut Grade **EXCELLENT**

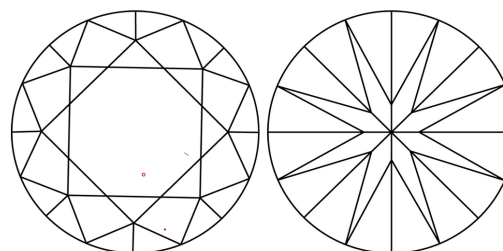


Sample Image Used

**PROPORTIONS**



**CLARITY CHARACTERISTICS**



**KEY TO SYMBOLS**

Red symbols indicate internal characteristics.  
Green symbols indicate external characteristics.

**COLOR**

D E F G H I J Faint Very Light Light

**CLARITY**

FL	IF	VS <sup>1-2</sup>	VS <sup>1-2</sup>	SI <sup>1-2</sup>	I <sup>1-3</sup>
Flawless	Internally Flawless	Very Very Slightly Included	Very Slightly Included	Slightly Included	Included

**ADDITIONAL GRADING INFORMATION**

Polish **EXCELLENT**

Symmetry **EXCELLENT**

Fluorescence **NONE**

Inscription(s) **IGI LG768662201**

Comments: This Laboratory Grown Diamond was created by Chemical Vapor Deposition (CVD) growth process. Type IIa



January 25, 2026  
IGI Report No LG768662201  
ROUND BRILLIANT  
1.58 CARAT  
Color Grade D  
Clarity Grade VS 1  
Depth 61.1%  
Table 60%  
Medium To Slightly Thick (Faceted)  
Cutler Pointed  
Polish EXCELLENT  
Symmetry EXCELLENT  
Fluorescence NONE  
Inscription(s) IGI LG768662201  
Comments: This Laboratory Grown Diamond was created by Chemical Vapor Deposition (CVD) growth process. Type IIa