



ELECTRONIC COPY

LG768661229
Report verification at igi.org



January 30, 2026

IGI Report Number **LG768661229**

Description **LABORATORY GROWN DIAMOND**

Shape and Cutting Style **EMERALD CUT**

Measurements **7.23 X 4.59 X 3.09 MM**

GRADING RESULTS

Carat Weight **1.01 CARAT**

Color Grade **FANCY YELLOW**

Clarity Grade **VVS 2**

January 30, 2026
IGI Report Number **LG768661229**
Description **LABORATORY GROWN DIAMOND**
Shape and Cutting Style **EMERALD CUT**
Measurements **7.23 X 4.59 X 3.09 MM**

GRADING RESULTS

Carat Weight **1.01 CARAT**

Color Grade **FANCY YELLOW**

Clarity Grade **VVS 2**

ADDITIONAL GRADING INFORMATION

Polish **EXCELLENT**

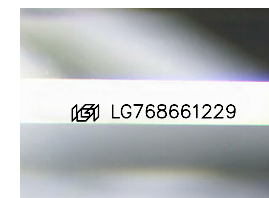
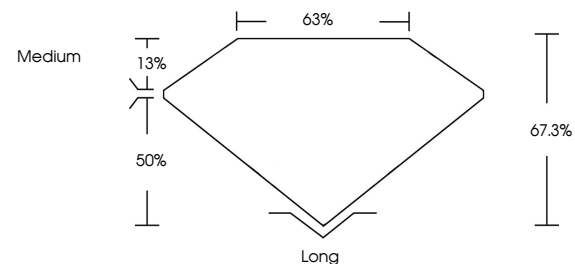
Symmetry **EXCELLENT**

Fluorescence **NONE**

Inscription(s) **IGI LG768661229**

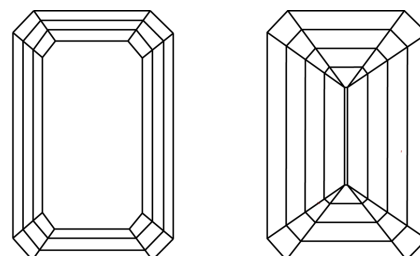
Comments: This Laboratory Grown Diamond was created by Chemical Vapor Deposition (CVD) growth process.
Indications of post-growth treatment.

PROPORTIONS



Sample Image Used

CLARITY CHARACTERISTICS



KEY TO SYMBOLS

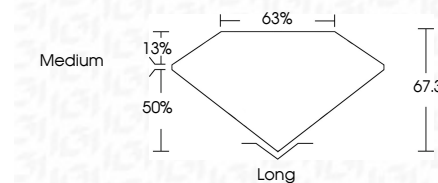
Red symbols indicate internal characteristics.
Green symbols indicate external characteristics.

COLOR

D E F G H I J Faint Very Light Light

CLARITY

| FL | IF | VVS ¹⁻² | VS ¹⁻² | SI ¹⁻² | I ¹⁻³ |
|----------|---------------------|-----------------------------|------------------------|-------------------|------------------|
| Flawless | Internally Flawless | Very Very Slightly Included | Very Slightly Included | Slightly Included | Included |



ADDITIONAL GRADING INFORMATION

Polish **EXCELLENT**

Symmetry **EXCELLENT**

Fluorescence **NONE**

Inscription(s) **IGI LG768661229**

Comments: This Laboratory Grown Diamond was created by Chemical Vapor Deposition (CVD) growth process.
Indications of post-growth treatment.



IGI



January 30, 2026
IGI Report No **LG768661229**
EMERALD CUT
1.01 CARAT
FANCY YELLOW
VVS 2
67.3%
63%
Medium
Long
EXCELLENT
EXCELLENT
NONE
IGI LG768661229

Comments: This Laboratory Grown Diamond was created by Chemical Vapor Deposition (CVD) growth process.
Indications of post-growth treatment.