



ELECTRONIC COPY

LG768661224
Report verification at igi.org



January 30, 2026
IGI Report Number **LG768661224**
Description **LABORATORY GROWN DIAMOND**
Shape and Cutting Style **CUT CORNERED
RECTANGULAR MODIFIED
BRILLIANT**
Measurements **6.95 X 4.85 X 3.30 MM**
GRADING RESULTS
Carat Weight **1.04 CARAT**
Color Grade **FANCY INTENSE GREENISH
BLUE**
Clarity Grade **VS 2**

LABORATORY GROWN DIAMOND REPORT

January 30, 2026
IGI Report Number **LG768661224**
Description **LABORATORY GROWN DIAMOND**
Shape and Cutting Style **CUT CORNERED RECTANGULAR
MODIFIED BRILLIANT**
Measurements **6.95 X 4.85 X 3.30 MM**

GRADING RESULTS

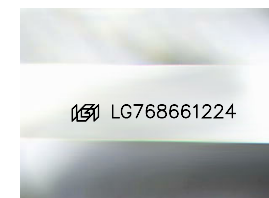
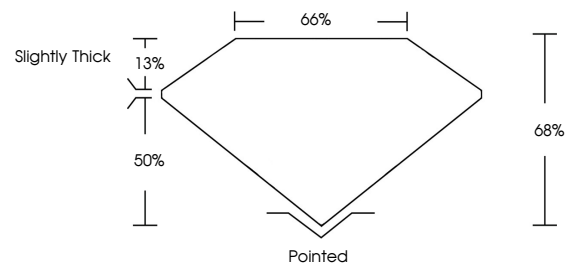
Carat Weight **1.04 CARAT**
Color Grade **FANCY INTENSE GREENISH
BLUE**
Clarity Grade **VS 2**

ADDITIONAL GRADING INFORMATION

Polish **EXCELLENT**
Symmetry **EXCELLENT**
Fluorescence **NONE**
Inscription(s) **(LGI) LG768661224**

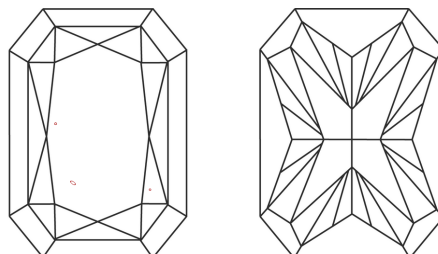
Comments: This Laboratory Grown Diamond was created by Chemical Vapor Deposition (CVD) growth process.
Indications of post-growth treatment.

PROPORTIONS



Sample Image Used

CLARITY CHARACTERISTICS



KEY TO SYMBOLS

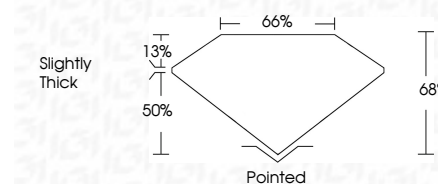
Red symbols indicate internal characteristics.
Green symbols indicate external characteristics.

COLOR

D E F G H I J Faint Very Light Light

CLARITY

FL	IF	VS ¹⁻²	VS ¹⁻²	SI ¹⁻²	I ¹⁻³
Flawless	Internally Flawless	Very Very Slightly Included	Very Slightly Included	Slightly Included	Included



ADDITIONAL GRADING INFORMATION

Polish **EXCELLENT**
Symmetry **EXCELLENT**
Fluorescence **NONE**
Inscription(s) **(LGI) LG768661224**
Comments: This Laboratory Grown Diamond was created by Chemical Vapor Deposition (CVD) growth process.
Indications of post-growth treatment.



January 30, 2026
IGI Report No LG768661224
CUT CORNERED RECT. MODIFIED BRILLIANT
6.95 X 4.85 X 3.30 MM
1.04 CARAT
FANCY INTENSE GREENISH BLUE
VS 2
68%
65%
Slightly Thick
Pointed
EXCELLENT
EXCELLENT
NONE
None
(LGI) LG768661224

Comments: This Laboratory Grown Diamond was created by Chemical Vapor Deposition (CVD) growth process.
Indications of post-growth treatment.