



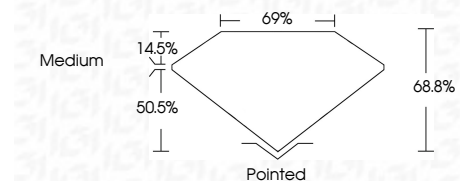
ELECTRONIC COPY

LG768658813
Report verification at igi.org



February 6, 2026
IGI Report Number **LG768658813**
Description **LABORATORY GROWN DIAMOND**
Shape and Cutting Style **SQUARE EMERALD CUT**
Measurements **8.65 X 8.36 X 5.75 MM**

GRADING RESULTS
Carat Weight **4.11 CARATS**
Color Grade **D**
Clarity Grade **VVS 2**



ADDITIONAL GRADING INFORMATION
Polish **EXCELLENT**
Symmetry **EXCELLENT**
Fluorescence **NONE**
Inscription(s) **IGI LG768658813**
Comments: This Laboratory Grown Diamond was created by Chemical Vapor Deposition (CVD) growth process. Type IIa



February 6, 2026
IGI Report No LG768658813
SQUARE EMERALD CUT
4.11 CARATS
D
4.11 CARATS
D
8.65 X 8.36 X 5.75 MM
8.65 X 8.36 X 5.75 MM
Color Grade **D**
Color Grade **D**
Clarity Grade **VVS 2**
Clarity Grade **VVS 2**
Depth **68.8%**
Depth **68.8%**
Table **14.5%**
Table **14.5%**
Girdle **Medium**
Girdle **Medium**
Culet **Pointed**
Culet **Pointed**
Polish **EXCELLENT**
Polish **EXCELLENT**
Symmetry **EXCELLENT**
Symmetry **EXCELLENT**
Fluorescence **NONE**
Fluorescence **NONE**
Inscription(s) **IGI LG768658813**
Inscription(s) **IGI LG768658813**
Comments: This Laboratory Grown Diamond was created by Chemical Vapor Deposition (CVD) growth process. Type IIa
Comments: This Laboratory Grown Diamond was created by Chemical Vapor Deposition (CVD) growth process. Type IIa

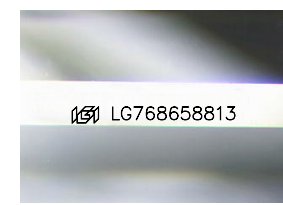
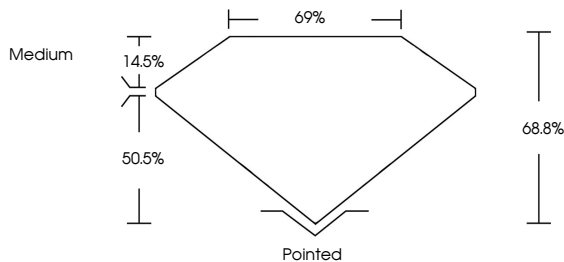
February 6, 2026
IGI Report Number **LG768658813**
Description **LABORATORY GROWN DIAMOND**
Shape and Cutting Style **SQUARE EMERALD CUT**
Measurements **8.65 X 8.36 X 5.75 MM**

GRADING RESULTS
Carat Weight **4.11 CARATS**
Color Grade **D**
Clarity Grade **VVS 2**

ADDITIONAL GRADING INFORMATION
Polish **EXCELLENT**
Symmetry **EXCELLENT**
Fluorescence **NONE**
Inscription(s) **IGI LG768658813**

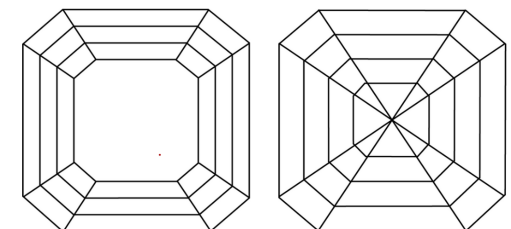
Comments: This Laboratory Grown Diamond was created by Chemical Vapor Deposition (CVD) growth process. Type IIa

PROPORTIONS



Sample Image Used

CLARITY CHARACTERISTICS



KEY TO SYMBOLS
Red symbols indicate internal characteristics.
Green symbols indicate external characteristics.

COLOR

D	E	F	G	H	I	J	Faint	Very Light	Light
---	---	---	---	---	---	---	-------	------------	-------

CLARITY

FL	IF	VVS ¹⁻²	VS ¹⁻²	SI ¹⁻²	I ¹⁻³
Flawless	Internally Flawless	Very Very Slightly Included	Very Slightly Included	Slightly Included	Included

