



**ELECTRONIC COPY**

LG768658796  
Report verification at igi.org

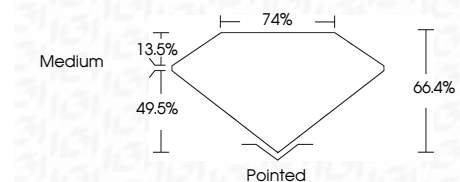


February 6, 2026  
IGI Report Number **LG768658796**  
Description **LABORATORY GROWN DIAMOND**

Shape and Cutting Style **CUT CORNERED  
RECTANGULAR MODIFIED  
BRILLIANT**

Measurements **10.22 X 7.17 X 4.76 MM**

**GRADING RESULTS**  
Carat Weight **3.03 CARATS**  
Color Grade **H**  
Clarity Grade **VVS 2**



**ADDITIONAL GRADING INFORMATION**  
Polish **EXCELLENT**  
Symmetry **EXCELLENT**  
Fluorescence **NONE**  
Inscription(s) **IGI LG768658796**  
Comments: This Laboratory Grown Diamond was created by Chemical Vapor Deposition (CVD) growth process. Type IIa



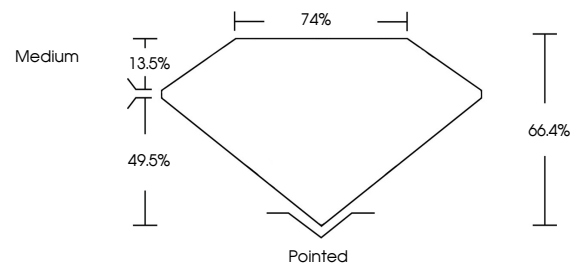
February 6, 2026  
IGI Report Number **LG768658796**  
Description **LABORATORY GROWN DIAMOND**  
Shape and Cutting Style **CUT CORNERED RECTANGULAR  
MODIFIED BRILLIANT**  
Measurements **10.22 X 7.17 X 4.76 MM**

**GRADING RESULTS**  
Carat Weight **3.03 CARATS**  
Color Grade **H**  
Clarity Grade **VVS 2**

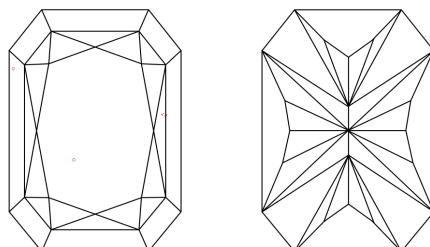
**ADDITIONAL GRADING INFORMATION**  
Polish **EXCELLENT**  
Symmetry **EXCELLENT**  
Fluorescence **NONE**  
Inscription(s) **IGI LG768658796**

Comments: This Laboratory Grown Diamond was created by Chemical Vapor Deposition (CVD) growth process. Type IIa

**PROPORTIONS**

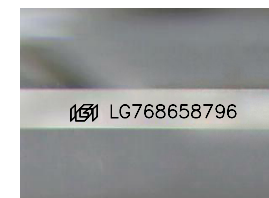


**CLARITY CHARACTERISTICS**



**KEY TO SYMBOLS**

Red symbols indicate internal characteristics.  
Green symbols indicate external characteristics.



Sample Image Used

**COLOR**

D E F G H I J Faint Very Light Light

**CLARITY**

FL	IF	VVS <sup>1-2</sup>	VS <sup>1-2</sup>	SI <sup>1-2</sup>	I <sup>1-3</sup>
Flawless	Internally Flawless	Very Very Slightly Included	Very Slightly Included	Slightly Included	Included

February 6, 2026  
IGI Report No LG768658796  
CUT CORNERED RECT. MODIFIED BRILLIANT  
10.22 X 7.17 X 4.76 MM  
3.03 CARATS  
H  
VVS 2  
66.4%  
74%  
Medium  
Pointed  
EXCELLENT  
EXCELLENT  
NONE  
IGI LG768658796

Comments: This Laboratory Grown Diamond was created by Chemical Vapor Deposition (CVD) growth process. Type IIa

