



**ELECTRONIC COPY**

LG768658475  
Report verification at [igi.org](http://igi.org)



February 9, 2026

IGI Report Number **LG768658475**

Description **LABORATORY GROWN DIAMOND**

Shape and Cutting Style **ROUND BRILLIANT**

Measurements **10.63 - 10.70 X 6.42 MM**

**GRADING RESULTS**

Carat Weight **4.53 CARATS**

Color Grade **E**

Clarity Grade **VVS 2**

Cut Grade **IDEAL**

February 9, 2026  
IGI Report Number **LG768658475**  
Description **LABORATORY GROWN DIAMOND**  
Shape and Cutting Style **ROUND BRILLIANT**  
Measurements **10.63 - 10.70 X 6.42 MM**

**GRADING RESULTS**

Carat Weight **4.53 CARATS**

Color Grade **E**

Clarity Grade **VVS 2**

Cut Grade **IDEAL**

**ADDITIONAL GRADING INFORMATION**

Polish **EXCELLENT**

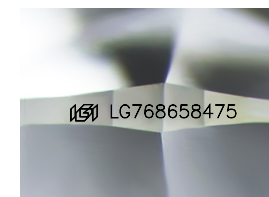
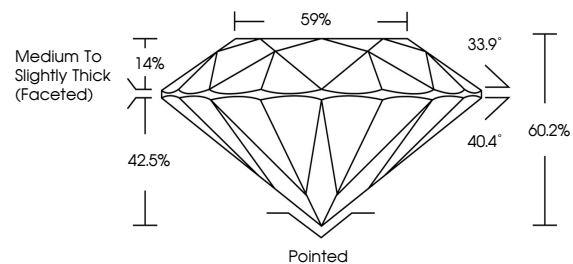
Symmetry **EXCELLENT**

Fluorescence **NONE**

Inscription(s) **LG768658475**

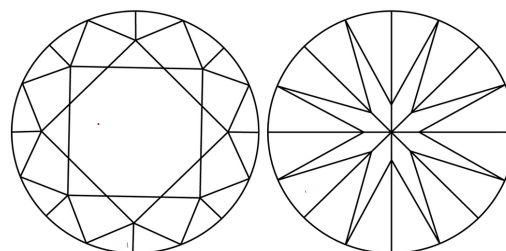
Comments: This Laboratory Grown Diamond was created by Chemical Vapor Deposition (CVD) growth process.  
Type IIa

**PROPORTIONS**



Sample Image Used

**CLARITY CHARACTERISTICS**



**KEY TO SYMBOLS**

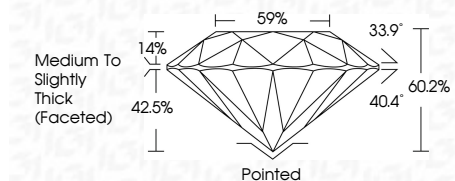
Red symbols indicate internal characteristics.  
Green symbols indicate external characteristics.

**COLOR**

D E F G H I J Faint Very Light Light

**CLARITY**

| FL       | IF                  | VVS <sup>1-2</sup>          | VS <sup>1-2</sup>      | SI <sup>1-2</sup> | I <sup>1-3</sup> |
|----------|---------------------|-----------------------------|------------------------|-------------------|------------------|
| Flawless | Internally Flawless | Very Very Slightly Included | Very Slightly Included | Slightly Included | Included         |



**ADDITIONAL GRADING INFORMATION**

Polish **EXCELLENT**

Symmetry **EXCELLENT**

Fluorescence **NONE**

Inscription(s) **LG768658475**

Comments: This Laboratory Grown Diamond was created by Chemical Vapor Deposition (CVD) growth process.  
Type IIa



**IGI**



|                  |                           |                 |                         |             |       |       |        |       |        |                                    |              |                |  |      |             |
|------------------|---------------------------|-----------------|-------------------------|-------------|-------|-------|--------|-------|--------|------------------------------------|--------------|----------------|--|------|-------------|
| February 9, 2026 | IGI Report No LG768658475 | ROUND BRILLIANT | 10.63 - 10.70 X 6.42 MM | 4.53 CARATS | E     | VVS 2 | IDEAL  | 60.2% | 59%    | Medium To Slightly Thick (Faceted) | Pointed      | EXCELLENT      | EXCELLENT  | NONE | LG768658475 |
| IGI              | Carat Weight              | Color Grade     | Clarity Grade           | Cut Grade   | Depth | Table | Girdle | Culet | Polish | Symmetry                           | Fluorescence | Inscription(s) | Comments: This Laboratory Grown Diamond was created by Chemical Vapor Deposition (CVD) growth process.<br>Type IIa |      |             |