



ELECTRONIC COPY

LG768651064 Report verification at igi.org



February 19, 2026 IGI Report Number LG768651064 Description LABORATORY GROWN DIAMOND Shape and Cutting Style ROUND BRILLIANT Measurements 7.40 - 7.44 X 4.53 MM GRADING RESULTS Carat Weight 1.53 CARAT Color Grade D Clarity Grade INTERNALLY FLAWLESS Cut Grade IDEAL

February 19, 2026 IGI Report Number LG768651064 Description LABORATORY GROWN DIAMOND Shape and Cutting Style ROUND BRILLIANT Measurements 7.40 - 7.44 X 4.53 MM

GRADING RESULTS

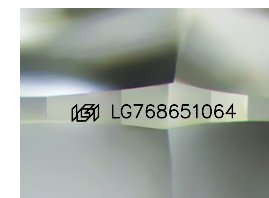
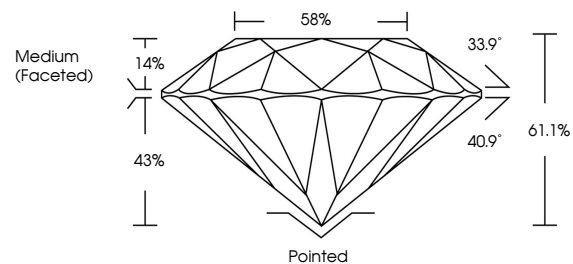
Carat Weight 1.53 CARAT Color Grade D Clarity Grade INTERNALLY FLAWLESS Cut Grade IDEAL

ADDITIONAL GRADING INFORMATION

Polish EXCELLENT Symmetry EXCELLENT Fluorescence NONE Inscription(s) IGI LG768651064

Comments: As Grown - No indication of post-growth treatment. This Laboratory Grown Diamond was created by High Pressure High Temperature (HPHT) growth process. Type II

PROPORTIONS



Sample Image Used

CLARITY CHARACTERISTICS



KEY TO SYMBOLS

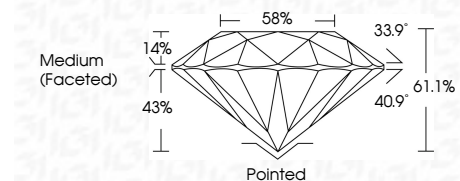
Red symbols indicate internal characteristics. Green symbols indicate external characteristics.

COLOR

D E F G H I J Faint Very Light Light

CLARITY

FL IF VS 1-2 VS 1-2 SI 1-2 I 1-3 Flawless Internally Flawless Very Very Slightly Included Very Slightly Included Slightly Included Included



ADDITIONAL GRADING INFORMATION

Polish EXCELLENT Symmetry EXCELLENT Fluorescence NONE Inscription(s) IGI LG768651064 Comments: As Grown - No indication of post-growth treatment. This Laboratory Grown Diamond was created by High Pressure High Temperature (HPHT) growth process. Type II



February 19, 2026 IGI Report No LG768651064 ROUND BRILLIANT 7.40 - 7.44 X 4.53 MM 1.53 CARAT D IF IDEAL 61.1% 58% Medium (Faceted) Pointed EXCELLENT EXCELLENT NONE NONE IGI LG768651064 Comments: As Grown - No indication of post-growth treatment. This Laboratory Grown Diamond was created by High Pressure High Temperature (HPHT) growth process. Type II