



**ELECTRONIC COPY**

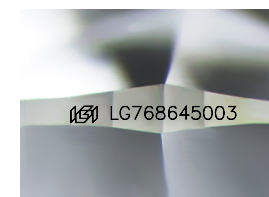
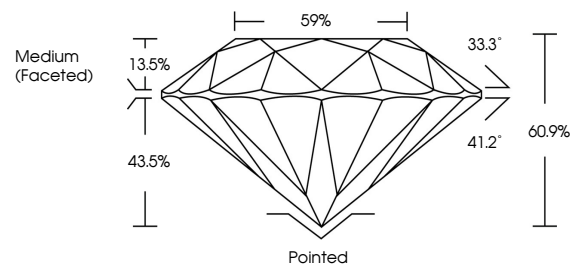
LG768645003  
Report verification at igi.org



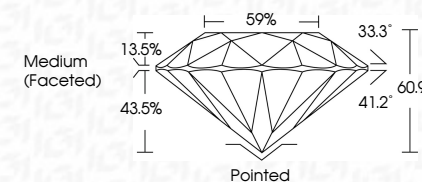
January 26, 2026  
IGI Report Number **LG768645003**  
Description **LABORATORY GROWN DIAMOND**  
Shape and Cutting Style **ROUND BRILLIANT**  
Measurements **8.77 - 8.84 X 5.35 MM**  
**GRADING RESULTS**  
Carat Weight **2.55 CARATS**  
Color Grade **F**  
Clarity Grade **VVS 1**  
Cut Grade **IDEAL**

January 26, 2026  
IGI Report Number **LG768645003**  
Description **LABORATORY GROWN DIAMOND**  
Shape and Cutting Style **ROUND BRILLIANT**  
Measurements **8.77 - 8.84 X 5.35 MM**  
**GRADING RESULTS**  
Carat Weight **2.55 CARATS**  
Color Grade **F**  
Clarity Grade **VVS 1**  
Cut Grade **IDEAL**

**PROPORTIONS**



Sample Image Used



**ADDITIONAL GRADING INFORMATION**

Polish **EXCELLENT**  
Symmetry **EXCELLENT**  
Fluorescence **NONE**  
Inscription(s) **IGI LG768645003**

Comments: This Laboratory Grown Diamond was created by Chemical Vapor Deposition (CVD) growth process. Type IIa

**ADDITIONAL GRADING INFORMATION**

Polish **EXCELLENT**  
Symmetry **EXCELLENT**  
Fluorescence **NONE**  
Inscription(s) **IGI LG768645003**  
Comments: This Laboratory Grown Diamond was created by Chemical Vapor Deposition (CVD) growth process. Type IIa

**COLOR**

D E F G H I J Faint Very Light Light

**CLARITY**

FL	IF	VS <sup>1-2</sup>	VS <sup>1-2</sup>	SI <sup>1-2</sup>	I <sup>1-3</sup>
Flawless	Internally Flawless	Very Very Slightly Included	Very Slightly Included	Slightly Included	Included



**IGI**



January 26, 2026  
IGI Report No **LG768645003**  
**ROUND BRILLIANT**  
**8.77 - 8.84 X 5.35 MM**  
Carat Weight **2.55 CARATS**  
Color Grade **F**  
Clarity Grade **VVS 1**  
Cut Grade **IDEAL**  
Depth **60.9%**  
Table **59%**  
Girdle **Medium (Faceted)**  
Culet **Pointed**  
Polish **EXCELLENT**  
Symmetry **EXCELLENT**  
Fluorescence **NONE**  
Inscriptions(s) **IGI LG768645003**  
Comments: This Laboratory Grown Diamond was created by Chemical Vapor Deposition (CVD) growth process. Type IIa