



# INTERNATIONAL GEMOLOGICAL INSTITUTE

ELECTRONIC COPY

## LABORATORY GROWN DIAMOND REPORT

January 22, 2026

IGI Report Number

LG768640706

Description

LABORATORY GROWN DIAMOND

Shape and Cutting Style

ROUND BRILLIANT

Measurements

6.19 - 6.22 X 3.90 MM

### GRADING RESULTS

Carat Weight

0.93 CARAT

Color Grade

D

Clarity Grade

VS 1

Cut Grade

EXCELLENT

### ADDITIONAL GRADING INFORMATION

Polish

EXCELLENT

Symmetry

EXCELLENT

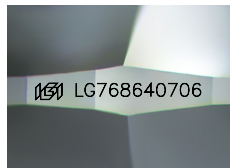
Fluorescence

NONE

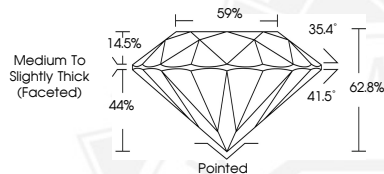
Inscription(s)

IGI LG768640706

Comments: This Laboratory Grown Diamond was created by Chemical Vapor Deposition (CVD) growth process. Type IIa



Sample Image Used



THIS DOCUMENT WAS PRODUCED WITH THE FOLLOWING SECURITY MEASURES: SPECIAL DOCUMENT PAPER, INK SCREENS, WATERMARK, BACKGROUND DESIGNS, HOLOGRAM AND OTHER SECURITY FEATURES NOT LISTED AND DO EXCEED DOCUMENT SECURITY INDUSTRY GUIDELINES.

For terms & conditions and to verify this report, please visit [www.igi.org](http://www.igi.org)



January 22, 2026

IGI Report Number LG768640706

ROUND BRILLIANT

LABORATORY GROWN DIAMOND

6.19 - 6.22 X 3.90 MM

Carat Weight 0.93 CARAT

Color Grade D

Clarity Grade VS 1

Cut Grade EXCELLENT

Polish EXCELLENT

Symmetry EXCELLENT

Fluorescence NONE

Inscription(s) IGI LG768640706

Comments: This Laboratory Grown Diamond was created by Chemical Vapor Deposition (CVD) growth process. Type IIa



January 22, 2026

IGI Report Number LG768640706

ROUND BRILLIANT

LABORATORY GROWN DIAMOND

6.19 - 6.22 X 3.90 MM

Carat Weight 0.93 CARAT

Color Grade D

Clarity Grade VS 1

Cut Grade EXCELLENT

Polish EXCELLENT

Symmetry EXCELLENT

Fluorescence NONE

Inscription(s) IGI LG768640706

Comments: This Laboratory Grown Diamond was created by Chemical Vapor Deposition (CVD) growth process. Type IIa